

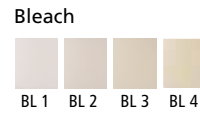
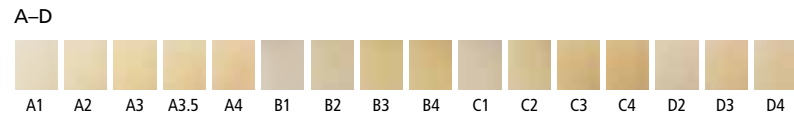
**IPS e.max<sup>®</sup> CAD**  
Lithium disilicate (LS<sub>2</sub>) glass-ceramic

**IPS e.max CAD Indications**  
Thin veneers, veneers, inlays, onlays, partial crowns, crowns, Anterior bridges, multiple-unit bridges, 3-unit-bridge (up to the second premolar as the terminal abutment)

**HT (High Translucency)**



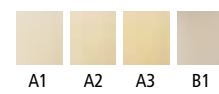
**Shades**



**MT (Medium Translucency)**



A-D



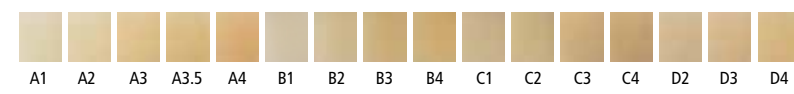
Bleach



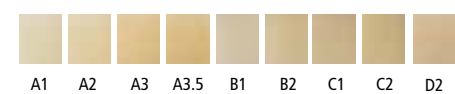
**LT (Low Translucency)**



A-D



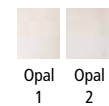
A-D



Bleach



**Impulse**



**IPS e.max<sup>®</sup> CAD**  
LITHIUM DISILICATE CERAMIC

## All Indications

### Full Coverage

Monolithic Restorations for All Indications – anterior, posterior crowns, and anterior bridges.



### Partial Coverage

Superior edge strength of IPS e.max CAD offers the dental professional high strength and durability even as restorations thin, such as with inlays, onlays, veneers, and thin veneers (.3mm).



Unlike any other CAD/CAM material, IPS e.max CAD covers a comprehensive spectrum of indications, offers a wide range of translucency levels, shades and block sizes and coordinated cements to ensure clinical performance and esthetic success.

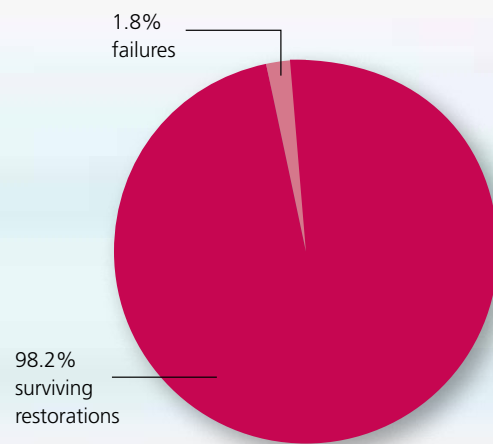
## Clinical Success

Scientific studies on the IPS e.max system began with its inception over 10+ years ago, and to date has demonstrated 98.2% survival rate with over 40 million restorations placed.

### Summary of the IPS e.max® CAD System

The survival rates of IPS e.max Press and IPS e.max CAD were combined to calculate the survival rate of the entire system. A total of 736 restorations from 12 clinical studies were included. The resulting overall survival rate of the IPS e.max system was 98.2%.

Source: IPS e.max Scientific Report Vol. 01/2001-2011



IPS e.max CAD restorations have demonstrated similar clinical success in both monolithic crowns and bridges, providing the security of clinically proven restorative materials.

## Beautiful Esthetics

Ivoclar Vivadent has a tradition of producing restorative materials that create beautiful smiles. IPS e.max CAD offers a wide range of shades, sizes, and translucencies to allow the dental professional to provide beautiful esthetics and the durability to ensure clinical success for all indications.

### BEFORE

### AFTER

