

Excite® F

LIGHT-CURING
TOTAL-ETCH ADHESIVE



Excite® F DSC

DUAL-CURING
TOTAL-ETCH ADHESIVE



Now bonding takes place ...
with light and **without light!**

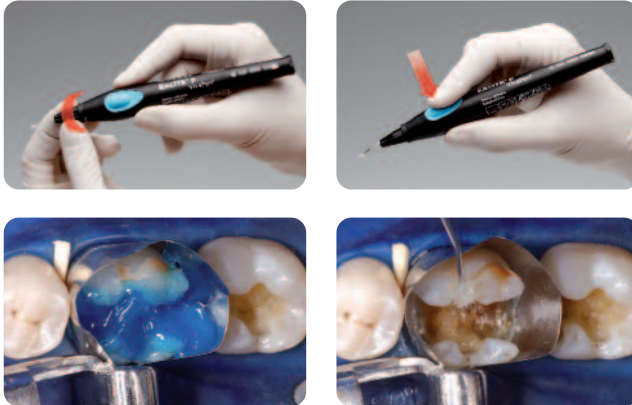
ExcITE® F

A strong bond is a question of chemistry

CONVENIENT & EFFICIENT

ExcITE® F is a light-curing, single component, fluoride releasing adhesive which is used in combination with the total-etch technique. It is employed in the placement of direct restorations (composites, compomers) as well as in the adhesive luting of indirect restorations (all-ceramics, composites) involving light-curing.

ExcITE F is available in the unique VivaPen, in bottles and in Soft Touch™ Single Dose vessels.



Source: Dr A Peschke, Ivoclar Vivadent AG, Schaan

Benefits of the VivaPen

- Easy and time-saving direct application in the patient's mouth
- Exact dosing and the specially designed VivaPen snap-on cannula saves material
- Good accessibility of all cavities due to the fine cannula
- Integrated fill-level indicator
- Around 120 applications per 2ml VivaPen

Precise application and gentle brushing

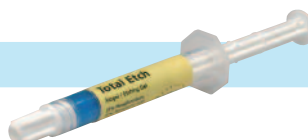
Exact and economical dispensing



Competence in Composites



OptraDam® Plus

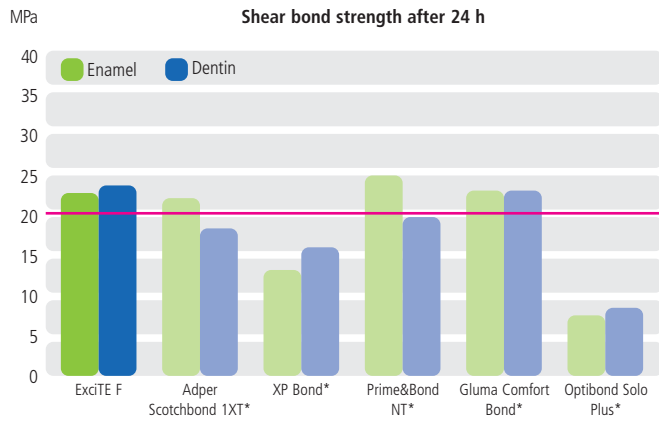


Total Etch



ExcITE® F

STRONG BOND



Strong bond to enamel and dentin

A single layer of ExcITE F is enough to establish a long-lasting bond to the tooth structure.

Acetone-free chemistry

ExcITE F contains ethanol as solvent, which allows the adhesive to be stored for longer periods of time, without affecting its quality or bonding results.

Reduced postoperative sensitivity

Fluoride release during the first few days after the restoration has been placed may help prevent postoperative sensitivities.

ExcITE F contains extremely fine fillers (nano fillers). Therefore, it is easy to distribute on the cavity surface in an even layer. In addition, a glossy layer becomes visible on the surface during application, which allows the uniform coverage of dentin and enamel areas to be visually checked.

Versatile system

Provided that it is previously light-cured, ExcITE F can also be used to place indirect restorations. Its low film thickness allows ample room for the cement utilized in luting procedures.



Control of the remaining amount of material



Focus Open Gold 2009

IPS Empress® Direct



AstroPol® and AstroBrush®



Tetric EvoFlow®

Bluephase® Style

Excite[®] F DSC

Dual Cure Single Component

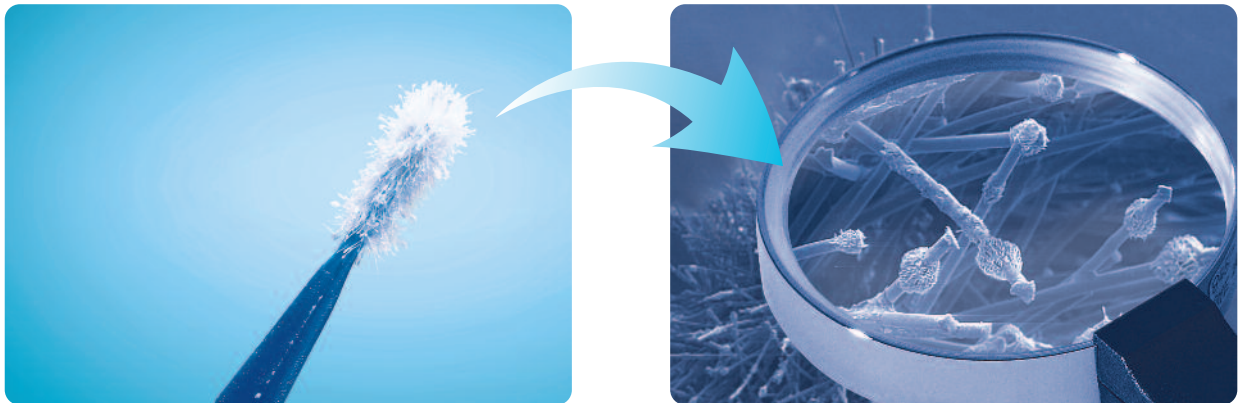
INNOVATIVE BRUSH TECHNOLOGY

Excite F DSC – Dual Cure Single Component – is a dual-curing, fluoride releasing adhesive for enamel and for dentin bonding, which is used in combination with the total-etch technique. Excite F has been further designed for clinical cases where light cannot be used for curing or in which chemically curing composites are employed.

Excite F DSC comprises a special patented applicator, which is coated with the initiators required for the dual-curing action. When the applicator is dipped into the adhesive solution, the initiators mix with the adhesive and impart it with the dual-curing properties.

Excite F DSC, like Excite F, achieves excellent bonding results and because of its acetone-free chemistry, it shows very good storage stability.

Applicator coated with initiator crystals under the electron microscope



Clinical application



1. Etching of root canal dentin and remaining tooth structure with phosphoric acid



2. Rinsing of the post space



3. Subsequent drying, eg, with paper points

EASY APPLICATION

The application of ExcITE F DSC is just as easy and efficient as that of the materials used in direct restorative techniques. The Single Dose vessels provide fresh adhesive for every application, without the risk of the adhesive drying out. When used in combination with self or dual-curing composites, it is not necessary to pre-cure ExcITE F DSC as is the case with many other adhesive systems. Therefore, the fit of the restoration is not compromised.

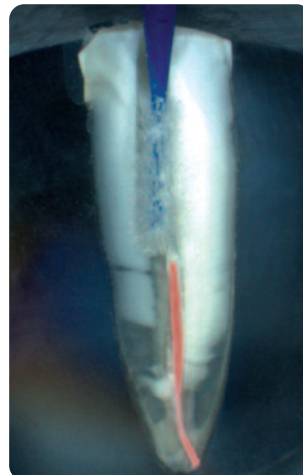
Indications

- Adhesive cementation of indirect restorations made of ceramic or composite with dual or self-curing luting composites (eg Variolink® II)
- Adhesive cementation of root posts (eg FRC Postec® Plus)
- Direct restorations and core build-ups with dual and self-curing composites (eg MultiCore®)
- Direct restorations/cementation with light-curing composites (eg Tetric EvoCeram®, Variolink II Base)

Applicators in two different shapes/sizes:



Regular (light blue) for normal preparations and Small/Endo (dark blue) for micro-cavities and root canals



Easy application of ExcITE F DSC in the root canal with an Endo applicator



4. Application of ExcITE F DSC for 10 s with an Endo applicator and drying



5. Cementation of the post and build-up with MultiCore Flow



6. Finished post and core build-up

ExcITE® F & ExcITE® F DSC

An unbeatable team

Benefits of ExcITE F

- High bonding values to enamel and dentin
- Consistent quality due to acetone-free chemistry
- Reduced postoperative sensitivity due to effective sealing of the dentin surface
- Available in the VivaPen, in bottles and in Soft Touch Single Dose vessels

Benefits of ExcITE F DSC

- Easy-to-use, one-step system due to the patented, initiator-coated applicator
- Based on ExcITE F technology and therefore featuring proven physical properties
- No pre-curing necessary when used in combination with self or dual-curing composite restoratives or luting composites
- Hygienic Single Dose presentation

Delivery forms*

ExcITE F

VivaPen

Intro Pack		627177
2 ml	ExcITE F	
100	VivaPen snap-on cannulas	
20	VivaPen protective sleeves	
2 g	Total Etch	
10	Total Etch application tips	

Refill/1		613724
2 ml	ExcITE F	
100	VivaPen snap-on cannulas	
20	VivaPen protective sleeves	

Refill/3		626969
3 x 2 ml	ExcITE F	
300	VivaPen snap-on cannulas	
20	VivaPen protective sleeves	

VivaPen accessories		
Refill VivaPen snap-on cannulas/100		627178
Refill VivaPen protective sleeves /300		627492

Soft Touch Single Dose

Refill		630377
50 x 0.1 g	ExcITE F	

Bottle

Refill		630375
5 g	ExcITE F	

Refill		630376
2 x 5 g	ExcITE F	

Bottle accessories		
Refill Regular applicators / 50		631699

ExcITE F DSC

Soft Touch Single Dose

Refill Regular		630378
50 x 0.1 g	ExcITE F DSC	

Refill Small/Endo		630380
50 x 0.1 g	ExcITE F DSC	

* The availability of the different delivery forms varies from country to country.

For additional information about the products, please contact Ivoclar Vivadent directly or visit our website.



This product forms part of our Composites and All-Ceramics areas of competence. All the products of these areas are optimally coordinated with each other.