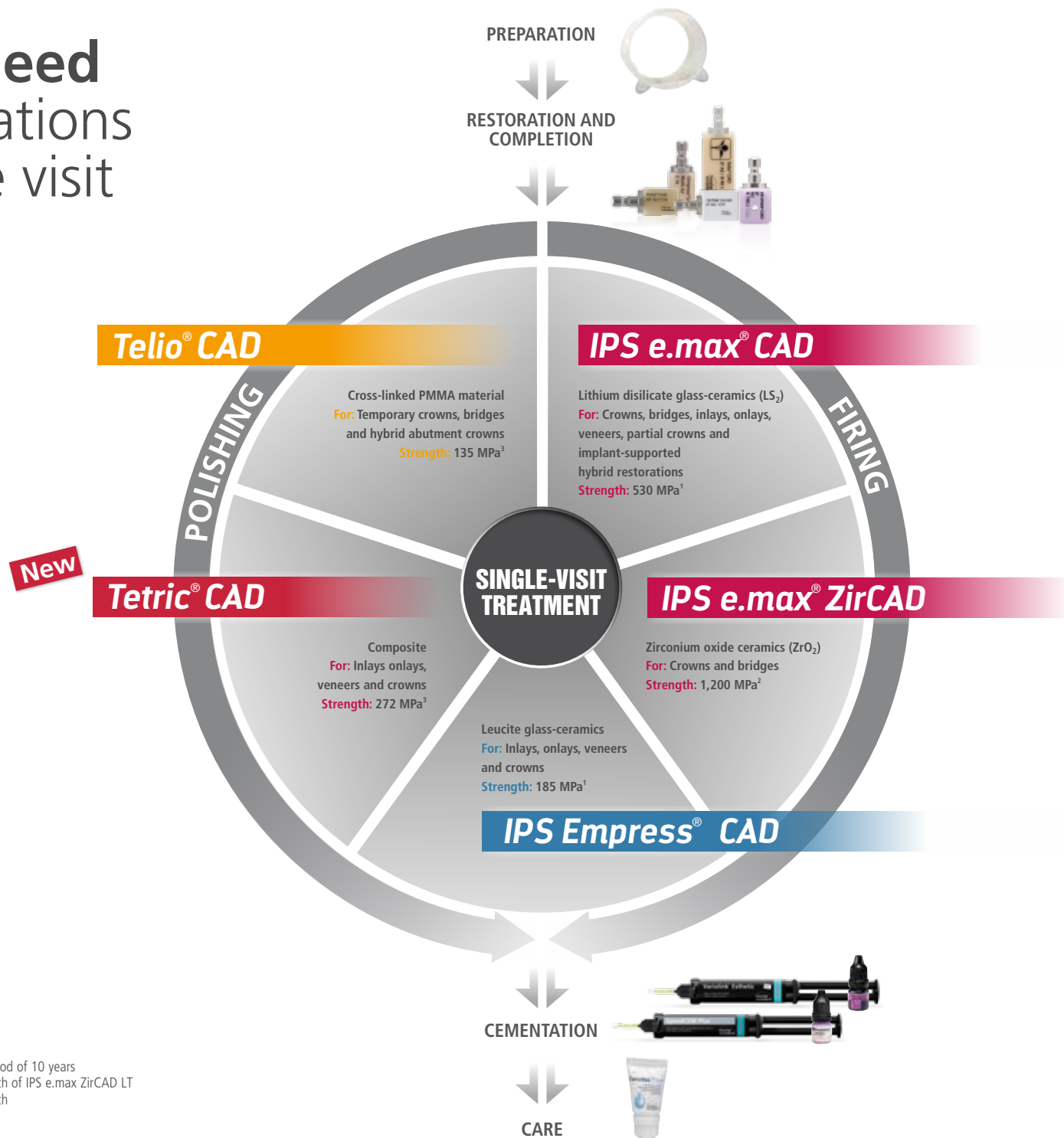


All you need for restorations in a single visit



¹ Average biaxial flexural strength, over a period of 10 years

² Typical mean value of biaxial flexural strength of IPS e.max ZirCAD LT

³ Typical mean value of biaxial flexural strength

Strong combinations

	Variolink® Esthetic		SpeedCEM® Plus	Telio® CS Link	Multilink® Hybrid Abutment
Curing	light-curing	dual-curing	self-curing with light-curing option	dual-curing (light- and self-cure)	self-curing
Mode	adhesive		self-adhesive	temporary	adhesive
	Adhese® Universal or Syntac®				
Conditioning	Monobond Etch & Prime®				Monobond® Plus and IPS Ceramic Etching Gel

Extraoral
cementation

IPS e.max® CAD Lithium disilicate glass-ceramics (LS ₂)					
Occlusal Veneers	✓	✓	—	—	—
Thin Veneers, Veneers	✓	✓	—	—	—
Inlays, Onlays, Partial Crowns	✓	✓	—	—	—
Minimally Invasive Crowns (1 mm)	—	✓	—	—	—
Crowns	—	✓	✓*	—	—
Three-Unit Bridges	—	✓	✓*	—	—
Hybrid Abutments	—	—	—	—	✓
Hybrid Abutment Crowns	—	—	—	—	✓
IPS e.max® ZirCAD Zirconium oxide ceramics (ZrO ₂)					
Crowns	—	—	✓	—	—
Bridges	—	—	✓	—	—
IPS Empress® CAD Leucite glass-ceramics					
Inlays, Onlays, Partial Crowns	✓	✓	—	—	—
Veneers	✓	✓	—	—	—
Crowns	—	✓	—	—	—
NEW Tetric® CAD Composite					
Veneers, Inlays, Onlays (e.g. Partial Crowns, Occlusal Veneers)	✓***	✓***	—	—	—
Crowns	—	✓***	—	—	—
Telio® CAD Cross-linked PMMA material					
Temporary Crowns	—	—	—	✓	—
Temporary Bridges (max. 2 connected bridge pontics)	—	—	—	✓	—
Temporary Hybrid Abutment Crowns	—	—	—	—	✓**

✓ Recommended product combinations
— Not recommended

* Conditioning with Monobond Etch & Prime®
** Conditioning with SR Connect
*** Conditioning with Adhese® Universal



Please take note of the corresponding instructions for use.



IPS e.max® Shade Navigation App



CNS: The Cementation Navigation System
www.cementation-navigation.com