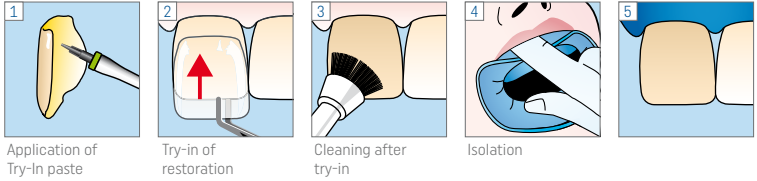


# Variolink Esthetic® LC

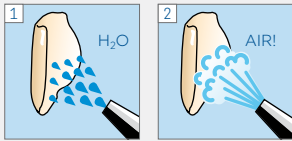
Placement of Veneers (glass ceramic, composite)

## Try-in

Variolink Esthetic Try-In



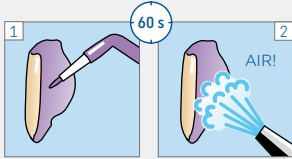
## Restoration



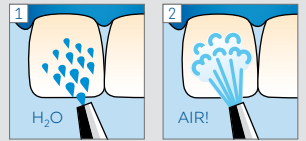
**Pre-treatment of ceramic restorations:**  
According to manufacturer's instructions  
E.g. IPS Empress: Etch for 60 s  
IPS e.max CAD/Press: Etch for 20 s  
with IPS Ceramic etching gel  
(hydrofluoric acid). Follow safety  
instructions.

**Pre-treatment of composite restorations:**  
According to manufacturer's instructions  
E.g. SR Nexco, 2 bar, Al<sub>2</sub>O<sub>3</sub> 100 μm  
or roughened with finishing diamonds.

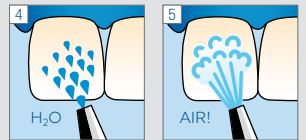
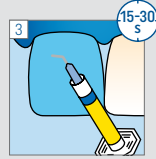
Monobond Plus



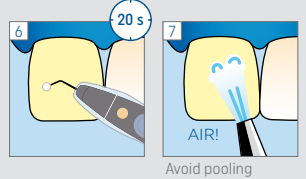
## Preparation



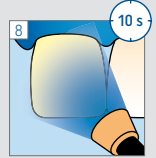
Total Etch:  
optional



Adhese Universal

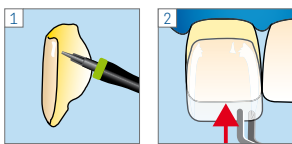


Bluephase G4

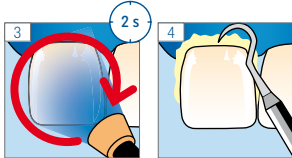


## Cementation

Variolink Esthetic LC

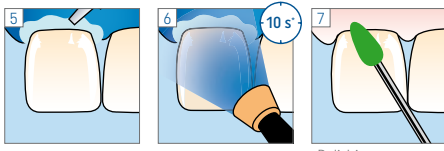
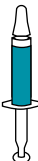


Bluephase G4

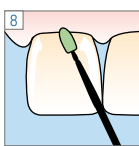


Secure the restoration until final polymerisation

Liquid Strip



Fluor Protector S



Manufacturer  
Ivoclar Vivadent AG  
Benderstrasse 2  
9494 Schaan/Liechtenstein  
www.ivoclar.com

CE 0123



Date information prepared:  
2022-08-23  
666332/EN/Rev. 1

ivoclar



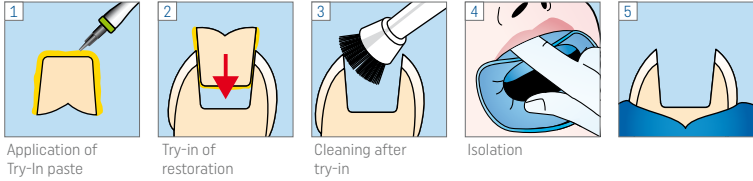
more information  
[www.cementation-navigation.com](http://www.cementation-navigation.com)

# Variolink Esthetic® LC

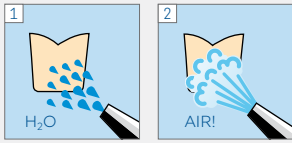
Placement of inlays (thickness < 2 mm) (glass ceramic, composite)

## Try-in

Variolink Esthetic Try-In



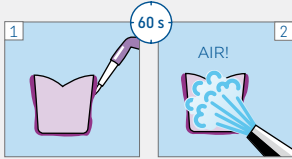
## Restoration



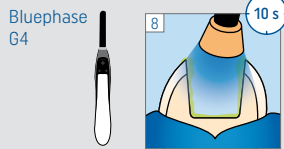
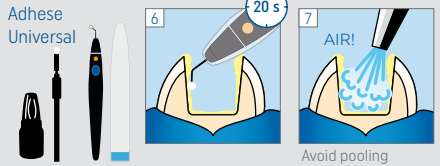
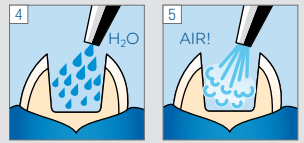
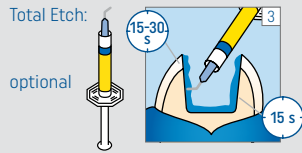
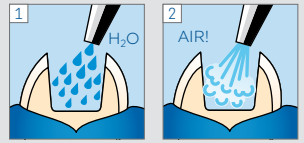
**Pre-treatment of ceramic restorations:**  
According to manufacturer's instructions  
E.g. IPS Empress: Etch for 60 s  
IPS e.max CAD/Press: Etch for 20 s  
with IPS Ceramic etching gel  
(hydrofluoric acid). Follow safety  
instructions.

**Pre-treatment of composite restorations:**  
According to manufacturer's instructions  
E.g. SR Nexco, 2 bar, Al<sub>2</sub>O<sub>3</sub> 100 µm  
or roughened with finishing diamonds.

Monobond Plus

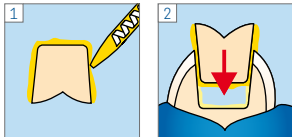


## Preparation

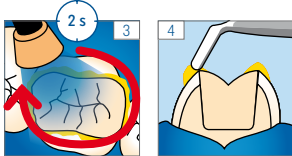


## Cementation

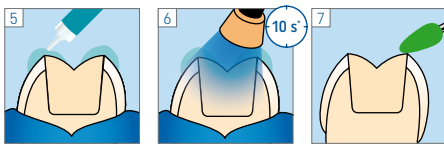
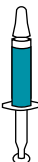
Variolink Esthetic LC



Bluephase G4

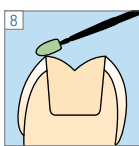


Liquid Strip



\* per segment and mm ceramic

Fluor Protector S



Manufacturer  
Ivoclar Vivadent AG  
Benderstrasse 2  
9494 Schaan/Liechtenstein  
www.ivoclar.com

CE 0123



Date information prepared:  
2022-08-23  
666332/EN/Rev. 1

ivoclar



more information  
[www.cementation-navigation.com](http://www.cementation-navigation.com)