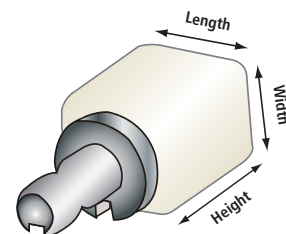


Ivoclar Vivadent Block Dimensions



IPS Empress® CAD

Abbreviation	IPS Empress CAD	Size		
		Width	Length	Height
Inlay	I 8	8.0	8.0	15.0
Inlay	I 10	8.5	10.0	15.0
Inlay	I 12	10.0	12.0	15.0
Crown	C 14	12.0	14.0	18.0
Crown	C 14 L	14.4	14.4	18.0

IPS e.max® CAD

Abbreviation	IPS e.max CAD	Size		
		Width	Length	Height
Inlay	I 12	10.4	12.5	15.0
Crown	C 14	12.4	14.5	18.0
Crown	C 16	17.8	15.8	18.0
Abutment	A 14	12.4	14.5	18.0
Abutment	A 16	17.8	15.8	18.0
Bridge	B 32	14.5	14.5	32.0
Bridge	B 40	15.2	15.2	38.0

Telio™ CAD

Abbreviation	Telio CAD	Size		
		Width	Length	Height
Abutment	A 16	17.8	15.8	18.0
Bridge	B 40 L	15.4	19.0	39.0
Bridge	B 55	15.5	19.0	55.0

CAD/CAM

Block Portfolio for CEREC®



IPS Empress[®] CAD

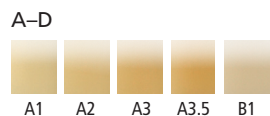
Leucite-reinforced glass-ceramic

IPS Empress CAD Indications
Veneers, inlays, onlays, partial crowns, single crowns

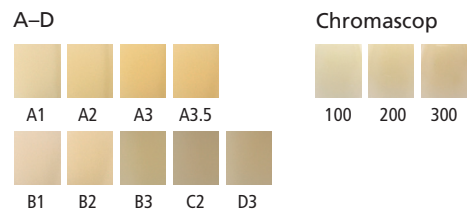
Multi



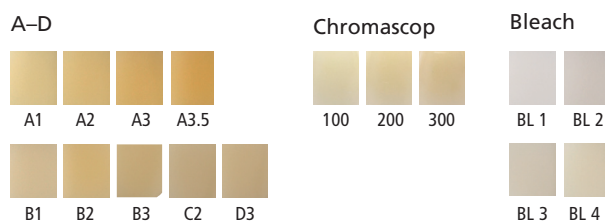
Shades



HT (High Translucency)



LT (Low Translucency)

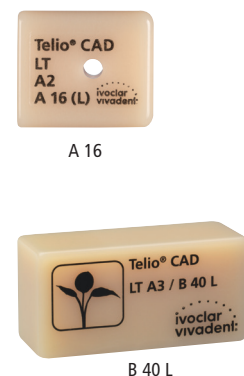


Telio[™] CAD

Polymethyl methacrylate

Telio CAD Indications
Temporary crowns and bridges with no more than 2 pontics, temporary restorations on implants, temporary hybrid abutment crowns, therapeutic restorations to correct TMJ and occlusal problems (max. 12 month)

LT (Low Translucency)



Shades



IPS e.max[®] CAD

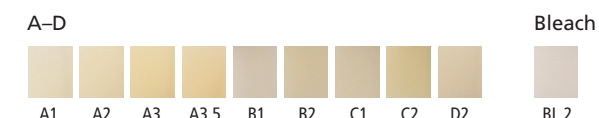
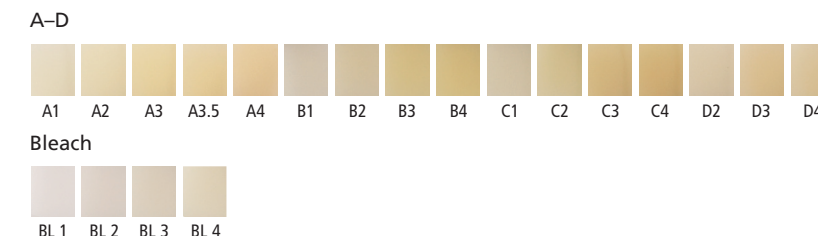
Lithium disilicate (LS₂) glass-ceramic

IPS e.max CAD Indications
Thin veneers, veneers, inlays, onlays, partial crowns, crowns, anterior bridges, multiple-unit bridges, 3-unit-bridge (up to the second premolar as the terminal abutment), hybrid abutments, abutment crowns.

HT (High Translucency)



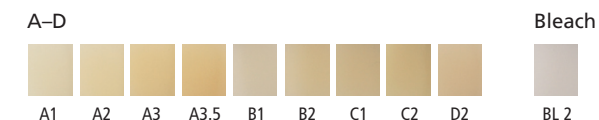
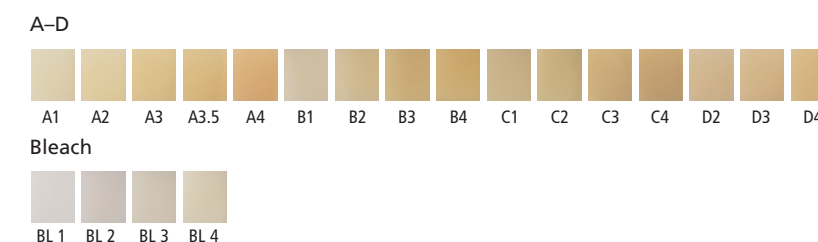
Shades



MT (Medium Translucency)



LT (Low Translucency)



MO (Medium Opacity)



Impulse



Abutment Solutions

