



# IPS Empress<sup>®</sup> CAD

*Leucite-Reinforced Glass Ceramic Blocks*

| BEAUTIFUL ESTHETICS

| MAXIMUM EFFICIENCY

| CLINICALLY PROVEN



  
**ivoclar**  
**vivadent**  
passion vision innovation

### The Esthetic Revolution<sup>SM</sup>

For over 20 years, IPS Empress has led “The Esthetic Revolution” offering clinicians the ability to provide their patients with beautiful, all-ceramic restorations. IPS Empress CAD, a leucite reinforced glass ceramic in block form, offers a broad range of shades in three translucencies that make the esthetic possibilities virtually unmatched.

### Beautiful Esthetics

IPS Empress CAD offers over 100 combinations of block size, shades, and translucencies to meet the esthetic demands of your patients.



### Multi Shade & Translucency

- Cut back and layer esthetics in a monolithic block
- Multiple translucencies create the most natural looking, esthetic restoration
- “Control” incisal translucency and gingival color

### High Translucency

- Excellent chameleon effect
- Blends easily with existing tooth structure
- Inlays virtually “disappear”
- 20% more translucent than the Low Translucency Block



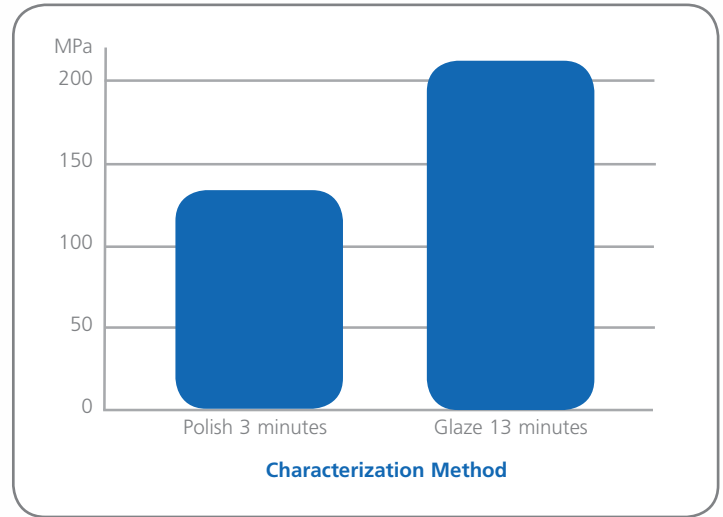
### Low Translucency

- Higher value
- “Block out” capability. Higher opacity level

### Efficient

IPS Empress CAD offers the option to simply mill and polish for maximum efficiency or glaze fire for up to a 50% increase in strength\*. Efficiency can be beautiful.

*\*Clinician's Report – October 2009, Volume 2 Issue 10*



## I CLINICALLY PROVEN

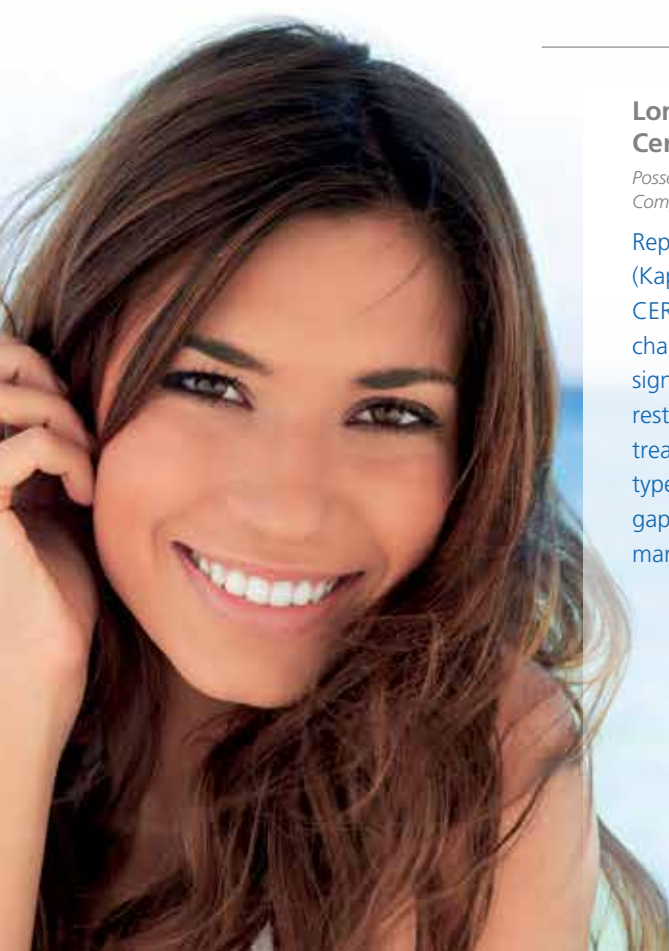
### Clinically Proven

Over 20 years and 30+ million restorations make IPS Empress one of the most clinically successful all-ceramic materials in dentistry.

### An 11-year clinical evaluation of leucite-reinforced glass-ceramic crowns: a retrospective study.

*Fradeani M, Redemagni M. Department of Prosthodontics, Louisiana State University, School of Dentistry, New Orleans, Louisiana, USA. maurofradeani@netco.it*

Crowns were studied over periods ranging from 4 to 11 years. The probability of survival of the 125 crowns was 95.2% at 11 years (98.9% in the anterior segment and 84.4% in the posterior segment).



### Longevity of 2,328 chairside Cerec inlays and onlays.

*Posselt A, Kerschbaum T. International Journal of Computerized Dentistry 2003;6:231-248.*

Reported a survival rate of 95.5% (Kaplan-Meier) after 9 years for 2,328 CEREC inlays and onlays fabricated chairside. The survival rate was not significantly affected by the size of the restoration, vitality of the tooth, the treatment of caries profunda or the type of tooth. An average composite gap of 236.3 µm and 45.1% excellent marginal gap were recorded.

### Investigation on the clinical reliability of IPS Empress crowns depending on two different cementation methods.

*Dr. D. Edelhoff, Klinikum für Zahnärztliche Prothetik, Universitätsklinikum RWTH, Aachen, Germany*

In 1992-1998, 110 patients received 423 anterior and posterior crowns in both jaws. Two-hundred fifty of the crowns (96 conventionally, 154 adhesively placed) in 71 patients were checked at least once. The restorations had been worn for more than 4 years on average. Different parameters were examined in the recall (plaque, postoperative sensitivity, secondary caries, aesthetics...). The survival rate for conventionally cemented crowns was 97.9% and 98.1% for adhesively cemented ones. No significant differences between the fracture rates for both cementation techniques were recorded.



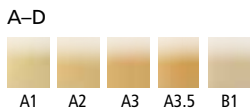
# IPS Empress<sup>®</sup> CAD

Leucite-reinforced glass-ceramic

## Multi



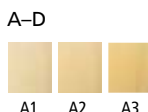
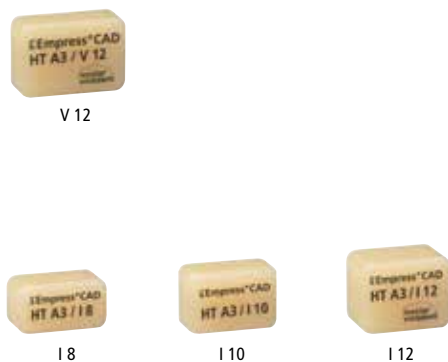
## Shades



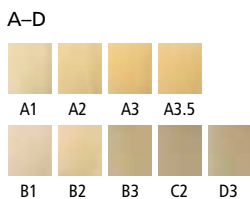
## Bleach



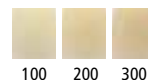
## HT (High Translucency)



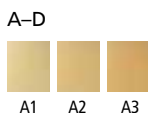
## Chromascope



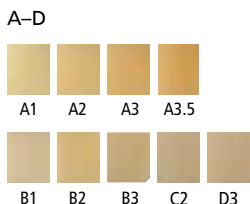
## Chromascope



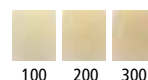
## LT (Low Translucency)



## Chromascope



## Chromascope



## Bleach



100% CUSTOMER SATISFACTION  
GUARANTEED!

[ivoclarvivadent.com](http://ivoclarvivadent.com)

©2013 Ivoclar Vivadent, Inc.  
Ivoclar Vivadent and Empress are registered trademarks of Ivoclar Vivadent, Inc. 664495 Rev.1 7/2013

### United States

175 Pineview Drive  
Amherst, NY 14228  
716.691.0010  
800.533.6825  
Fax: 716.691.2285  
mail@ivoclarvivadent.com

### Canada

1-6600 Dixie Road  
Mississauga, Ontario L5T 2Y2  
Canada  
Phone +1 905 670 8499  
Fax +1 905 670 3102  
mail@ivoclarvivadent.com

