

# Compoglass® F, Compoglass® Flow and AdheSE® One F



A great Team

# Extra protection for young teeth



## Convincing properties:

- Easy sculpting and contouring
- Fluoride release
- Available in a flowable consistency (Compoglass Flow)
- Ideal when used in combination with AdheSE® One F

## A special tip for you:

Use OptraPol® Next Generation to polish your restoration. It allows you to achieve a high lustre and smooth surface in just one working step.

## Advantages for the practice team:

- Clinically proven for many years
- Particularly appropriate for children
- Economical

## Advantages for the young patient:

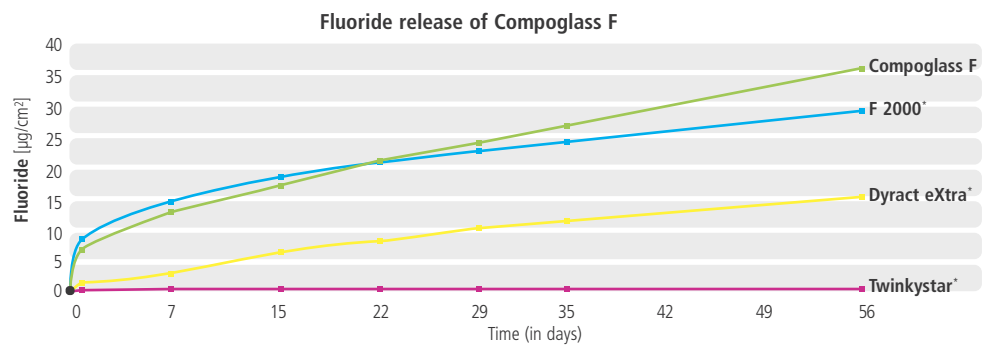
- Proven material with many years of clinical use
- Minimized risk of caries recurrence
- Rapid treatment solution

## Compoglass® F

combines the benefits of glass ionomers and those of composites in one material with its special combination of fillers and a polymer matrix. The material releases fluoride ions from three independent sources to reduce the risk of secondary caries. This easy to handle material is particularly suitable for restoring deciduous teeth and defects in cervical areas.

## Compoglass® Flow

is the flowable variant of Compoglass F. The material is directly placed into the cavity using the convenient, long extra-thin Cavifil tips. Due to its flowable consistency, Compoglass Flow readily adapts to the cavity margins. Excellent results are achieved even in clinically demanding situations.



Compoglass F (batch: M53216), F 2000 (batch: OJM),  
Dyract eXtra (batch: 1003001848), Twinkystar (batch: 0949136)

\*) Not a registered trademark of Ivoclar Vivadent AG  
Source: R&D Ivoclar Vivadent AG, Schaan, July 2010

## Competence in Composites



OptraGate® Junior



AdheSE® One F



Compoglass® Flow

# A great team

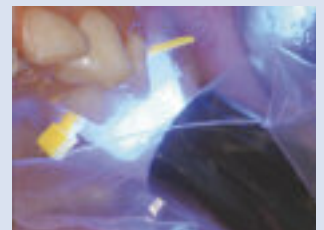
## The self-etching, fluoride-releasing adhesive in the innovative VivaPen® delivery form

### AdheSE® One F

is a self-etching, fluoride-releasing adhesive. The single-component bonding agent is particularly suitable for use with Compoglass F and Compoglass Flow. The VivaPen allows AdheSE One F to be applied directly in the oral cavity, which saves time - a considerable advantage when treating children.

#### Advantages:

- No phosphoric acid etching
- Quick and easy application
- Reliable adhesion on dentin and enamel
- Storage at room temperature without any loss of quality due to patented monomers



Source: Dr D Horvath, Germany



# Compoglass® F, Compoglass® Flow and AdheSE® One F – the ideal combination

## Delivery forms



### Compoglass F

#### Refill

20 x 0.25 g Cavifils in 1 shade, available in the shades 105, 110/A1, 140/A2, 210/A3, 230/A3.5, 310/B3, 340/A4, 410/D3, 510/C3, 540

#### Refill

1 x 3.5 g Syringe in shade 210/A3



### Compoglass Flow

#### Refill

20 x 0.25 g Cavifils in 1 shade, available in the shades 140/A2, 210/A3, 230/A3.5, 340/A4



### AdheSE One F

#### AdheSE One F Refill

1 x 2 ml AdheSE One F in the VivaPen  
100 VivaPen snap-on cannulas  
20 VivaPen sleeves

#### AdheSE One F Refill 3

3 x 2 ml AdheSE One F in the VivaPen  
300 VivaPen snap-on cannulas  
20 VivaPen sleeves

**VivaPen snap-on cannulas Refill (100 pcs)**

**VivaPen sleeves Refill (300 pcs)**



This is a product from our "Composites" competence field. Products from this field are optimally coordinated with each other.