

# SR PHONARES®

MODERN MASTERPIECES



## ARTISTRY IN PROSTHETICS: NATURAL ANTERIOR ESTHETICS

The SR PHONARES NHC tooth moulds are skillfully sculpted to offer the same expressive characteristics as their natural counterparts. They present dental technicians with unheard-of opportunities to create dental restorations inspired by nature.

Discover a new level of natural beauty and vibrancy.

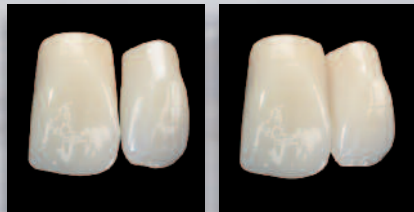
### Fine esthetic qualities

- Unparalleled surface texture
- Harmonious proportions of translucency, opalescence and fluorescence



### Impressive functionality

- True-to-nature "white esthetics" due to specially designed interdental closures
- Easy setup of anterior teeth due to proximal "Set & Fit" design



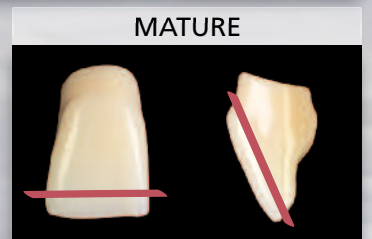
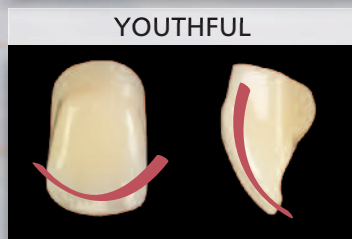
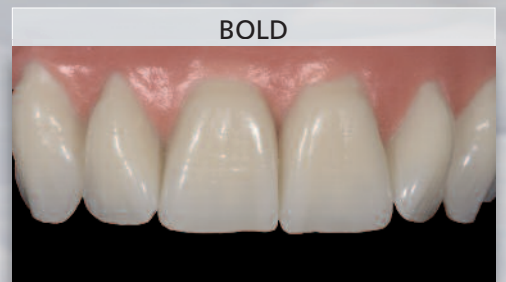
### Individually layered tooth moulds

The tooth moulds are specifically layered to suit the characteristics of each individual tooth shape.



A RANGE OF TOOTH MOULDS DESIGNED TO MATCH THE AGE AND CHARACTERISTICS OF THE INDIVIDUAL PATIENT

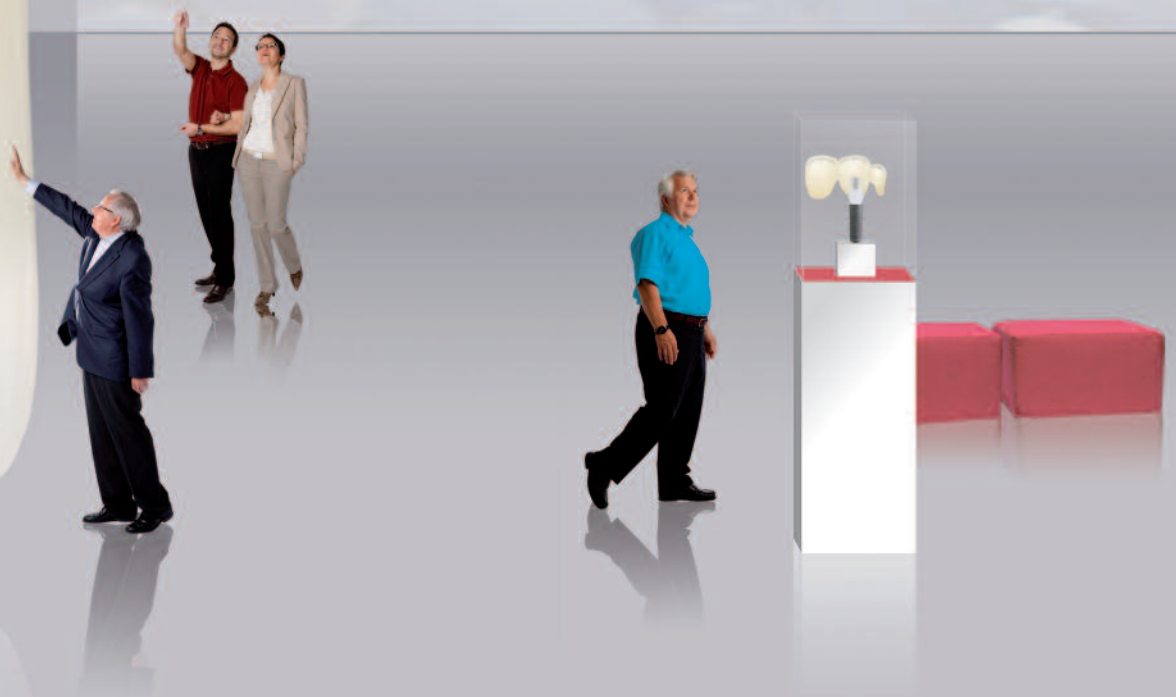
# SR PHONARES<sup>®</sup> NHC



- No wear
- Unabrased incisal edge
  - Pronounced facial curvature

- Low wear
- Slightly abraded incisal edge
  - Reduced facial curvature

- Severe wear
- Heavily abraded incisal edge
  - Flat facial curvature



# STRAIGHTFORWARD TOOTH SELECTION

Eighteen upper and four lower tooth moulds in an elaborate four-layer design are available for your patients.

The tooth moulds are arranged according to a newly designed concept, allowing you to swiftly select the denture teeth that most accurately match the individual characteristics of your patient.

## Tooth selection is as simple as this:

Determine the size, i.e. dimension, of the required tooth mould with the help of the Phonares FormSelector. You may select from sizes **S**, **M** or **L**.

Determine the shape of the teeth and select the appropriate category of tooth moulds: **soft** or **bold**.

Determine the age, i.e. the **degree of wear** of the teeth.





YOUTHFUL



UNIVERSAL



MATURE



## ARTISTRY IN PROSTHETICS: UNIVERSAL POSTERIOR TEETH

# SR PHONARES<sup>®</sup> *Typ* NHC

The SR PHONARES<sup>Typ</sup> NHC teeth are suitable for a wide range of applications and are therefore the classic denture teeth for **partial, complete and hybrid denture prosthetics**.

As they are easily aligned with the teeth in the opposing jaw, these teeth are particularly economical.



Conventional occlusion

### Intercuspation



One-to-two setup

### Time-saving ridge-lap design

The dimensions of the basal surface are especially reduced. The amount of grinding required in the cervical region is therefore minimized, saving time and permitting efficient procedures.

The anatomically shaped tooth base can be easily adapted to the alveolar ridge or ground to fit the construction component.

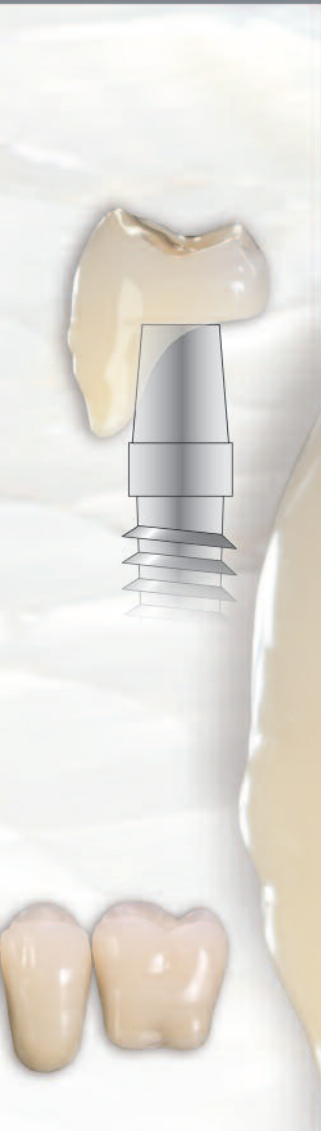
### Widely dimensioned facial and cervical surfaces

These dimensions are ideal for covering implant abutments and other construction components.



ARTISTRY IN PROSTHETICS:  
IMPLANT-BORNE POSTERIOR RESTORATIONS

SR **PHONARES**<sup>®</sup>  
*Lingual* NHC



The lingualized occlusion of the SR PHONARES*Lingual* NHC tooth line offers an ideal occlusal scheme for implant-borne removable dental restorations.



Lingualized occlusion

The ideal distribution of oral forces, combined with the extraordinarily high wear resistance of the material, imparts high durability to these dental prostheses.



Intercuspation



One-to-one setup

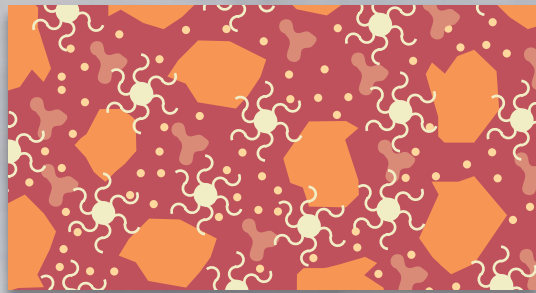




One-to-two setup



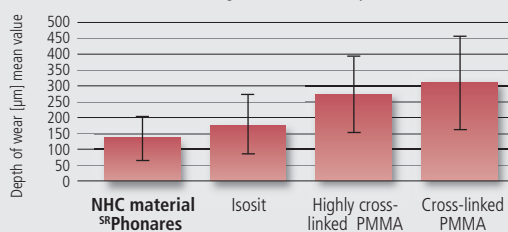
## CREATIVE INNOVATIONS NANO-HYBRID COMPOSITE



- UDMA matrix
- High-density silanized SiO<sub>2</sub>
- Inorganically filled UDMA polymer
- Silanized SiO<sub>2</sub> nano-particles
- PMMA clusters

### In vitro wear study of denture tooth materials

Pin-on-block with steatite antagonist, after 120,000 cycles



Source: Dr. Dipl. Ing. Martin Rosentritt, 08/2009, University of Regensburg, Germany

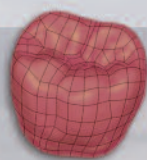
Ivoclar Vivadent has successfully developed a new pioneering ISO filler technology. The inorganic nano-fillers incorporated in this new nano-hybrid composite ensure an exceptionally homogeneous material quality.

In addition, this new material offers excellent shade stability and outstanding wear resistance.

### Excellent wear behaviour

- Extraordinary resistance to wear confirmed in various in vitro studies
- Reduction of wear-induced loss of function
- Excellent durability

# SR PHONARES®



### Advanced CAD/CAM manufacturing process

- Ideal symmetry in the anterior region
- Symmetrical external geometry in the posterior region
- True-to-dimension enlargement of posterior teeth

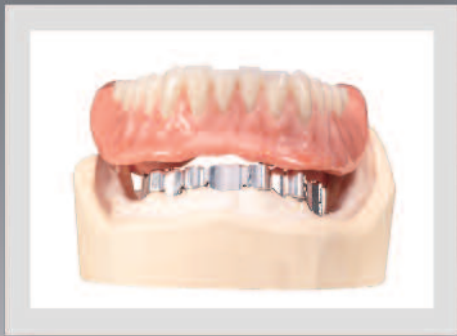


### Ingenious advantages

- No production-induced proximal press flash
- Consistent proximal contacts
- Esthetic interdental design

## A MASTERLY RANGE OF INDICATIONS

in line with the Biofunctional Prosthetic System – BPS



### Highlights at a glance

- Due to their maximum resistance to wear, the teeth are especially suited to meeting the demanding requirements of implant-borne dentures.
- A wealth of true-to-nature esthetic moulds based on a design that takes age- and type-related characteristics into account.
- Posterior tooth lines are available in two different schemes for conventional and lingualized setup techniques.
- The dimensions of the basal surface are especially reduced. The amount of grinding required in the cervical region is therefore minimized, saving time and permitting efficient procedures.
- The wide tooth base increases the level of “white esthetics” as construction components and abutments are covered more effectively.

### Conclusion:

SR PHONARES is THE tooth for implant-borne dental prostheses.



# SR PHONARES®

## MODERN MASTERPIECES

### Delivery forms

SR PHONARES® NHC  
18 upper anterior moulds  
4 lower anterior moulds



SR PHONARES® Typ NHC  
3 maxillary sets  
3 mandibular sets



SR PHONARES® Lingual NHC  
3 maxillary sets  
3 mandibular sets



Shade range  
16 A-D shades  
Bleach shades



### Physical data

| Physical data              |                    | Incisal and dentin | Back incisal and cervical |
|----------------------------|--------------------|--------------------|---------------------------|
| Flexural strength          | ISO 10477          | > 125              | > 120 N/mm <sup>2</sup>   |
| Modulus of elasticity      | ISO 10477          | > 4500             | > 3000 N/mm <sup>2</sup>  |
| Ball indentation hardness  | ISO 2039-1         | > 240              | > 170 N/mm <sup>2</sup>   |
| Water absorption           | ISO 10477          | < 23               | < 26 µg/mm <sup>3</sup>   |
| Water solubility           | ISO 10477          | 0                  | < 0.1 µg/mm <sup>3</sup>  |
| Vickers hardness HV 0.5/30 | interne Vorschrift | > 260              | > 190 N/mm <sup>2</sup>   |



This is a product from our field of competence in "Implant Esthetics". Products from this range are coordinated with each other.

This brochure was created with friendly support.  
We would like to extend our gratitude to:

MDT Kurt Fiedler, Ivoclar Vivadent GmbH, Ellwangen (Germany)  
MDT Thorsten Michel, Schorndorf (Germany)  
Wohlgenannt Zahntechnik KEG, Dornbirn (Austria)

