

# Cervitec®

Protective varnish, oral health care gel and mouth  
rinse containing chlorhexidine



Targeted protection –  
controlled risk



# Cervitec®

Protective varnish, oral health care gel  
and mouth rinse

## Customized solutions with chlorhexidine for individual needs and requirements

A high number of certain bacteria in the mouth will compromise the health of teeth, gums and the oral mucous membrane. Apart from these tissues, implants, dentures and dental restorations are also at risk. Chlorhexidine is capable of controlling these bacteria. Your treatment plans require individual solutions in terms of the concentration, the delivery form and the application of this active ingredient. The Cervitec® products containing chlorhexidine offer these solutions:

### Cervitec Plus – protective varnish

### Cervitec Gel – oral health care gel

### Cervitec Liquid – mouth rinse



Cervitec Plus



Cervitec Gel



Cervitec Liquid

# Cervitec® Plus

Protective varnish containing chlorhexidine  
and thymol



Targeted protection –  
controlled risk



*Cervitec Plus in the dental office*

# Cervitec® Plus



## Protective varnish containing chlorhexidine and thymol

### Gives micro-organisms a hard time

The caries risk rises if the number of mutans streptococci increases significantly in the mouth. In these cases, routine oral hygiene measures, professional tooth cleaning and fluoridation do not adequately protect the teeth from damage.

The Cervitec Plus varnish system, which contains the effective combination of the active ingredients chlorhexidine and thymol, allows you to selectively control these germs and therefore reduce an important caries risk factor.

The varnish protects exposed root surfaces and reduces the bacterial activity on teeth. Therefore, Cervitec Plus assists in lowering the caries risk and prevents and helps treat gingivitis.

### Spot-on effectiveness

Cervitec Plus provides protection exactly where it is needed. The varnish delivery form in combination with your professional skill enables precision application. Therefore, the active ingredients chlorhexidine and thymol can take effect directly on the tooth surface.

### Advanced protection for risk areas

Cervitec Plus offers advanced protection for difficult-to-reach and highly susceptible areas, for example:

- ▶ exposed root surfaces
- ▶ open dentin tubules
- ▶ fissures
- ▶ erupting teeth
- ▶ proximal surfaces
- ▶ areas around brackets and bands
- ▶ along the margins of implants, crowns and bridges

Application of Cervitec Plus on a susceptible tooth neck



Picture: Dr. A. Peschke

Targeted, easy application of the varnish on retainers

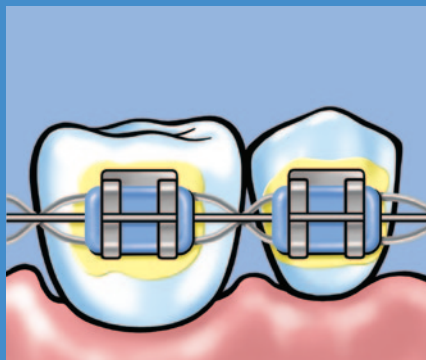
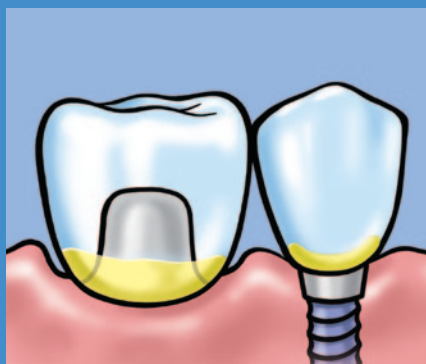
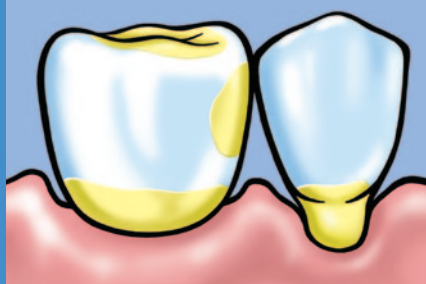


Picture: Dr. R. Watzke



Takes effect where it is needed

**Cervitec Plus**



**Many people benefit**

**Cervitec Plus helps to control the caries risk**

- ▶ in the event of high mutans streptococci counts
- ▶ in xerostomia patients
- ▶ in families (transmission)

**Cervitec Plus protects teeth in situations where patients are incapable of carrying out proper oral hygiene.**

The professional application of the varnish opens up alternative treatment possibilities for all patients who cannot effectively care for their teeth because of impaired motor skills.

**Cervitec Plus helps to maintain the high quality of precision restorations, for example:**

- ▶ implant-retained restorations
- ▶ crowns
- ▶ bridge abutments

**Years of expertise**

Cervitec Plus is based on many years of experience with its predecessor Cervitec, whose clinical effectiveness has been proven in numerous international studies and under practical conditions.

**Features**

1 % chlorhexidine plus 1 % thymol in a homogeneous solution. After the varnish has dried, the concentration is approx. 10 times higher.

Professional application of the varnish

Optimum flow and wetting properties

Colourless, clear

Innovative varnish base

Heightened moisture tolerance

**Benefits**

Effective control of bacteria

- Selective treatment of risk areas
- Extended availability of active ingredients

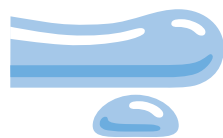
- Treatment of difficult-to-reach areas
- Homogeneous protective layer on exposed root surfaces

Optimum esthetics in the anterior part of the mouth

Improved and longer adhesion

Easier application

# Cervitec® Gel



Oral health care gel containing chlorhexidine and fluoride



## Professional care in the office and at home

Patients who are highly susceptible to caries or who have gingivitis, periodontitis, peri-implantitis or denture stomatitis can be advised to supplement

the treatment they receive in the dental office with Cervitec Gel at home.

Cervitec Gel protects the gums, peri-implant tissue, the oral mucous membrane and teeth. Therefore, it also helps to keep restorations, dentures and implant-retained dental work in good condition.

Apart from chlorhexidine, Cervitec Gel contains fluoride, which strengthens natural teeth and protects them from caries.

## Information that will interest patients

- ▶ The proven ingredient chlorhexidine reduces the number of harmful bacteria in the mouth.
- ▶ The formation of a bacterial film is reduced.
- ▶ Inflammations of the gums and the oral mucous membrane subside and the tissue heals.
- ▶ Hardly any bacteria adhere to dentures.
- ▶ Breath becomes fresher.
- ▶ Fluoride protects natural teeth.

## Application according to individual needs

Cervitec Gel is used according to individual needs of patients. It is easy and convenient to apply:

- ▶ directly on the gums, peri-implant tissue, the oral mucous membrane or the inner part of dentures
- ▶ to proximal areas with an interdental brush
- ▶ on the tongue
- ▶ Cervitec Gel can be used to brush the teeth

Due to its additional fluoride content, Cervitec Gel can be used instead of toothpaste on a temporary basis.



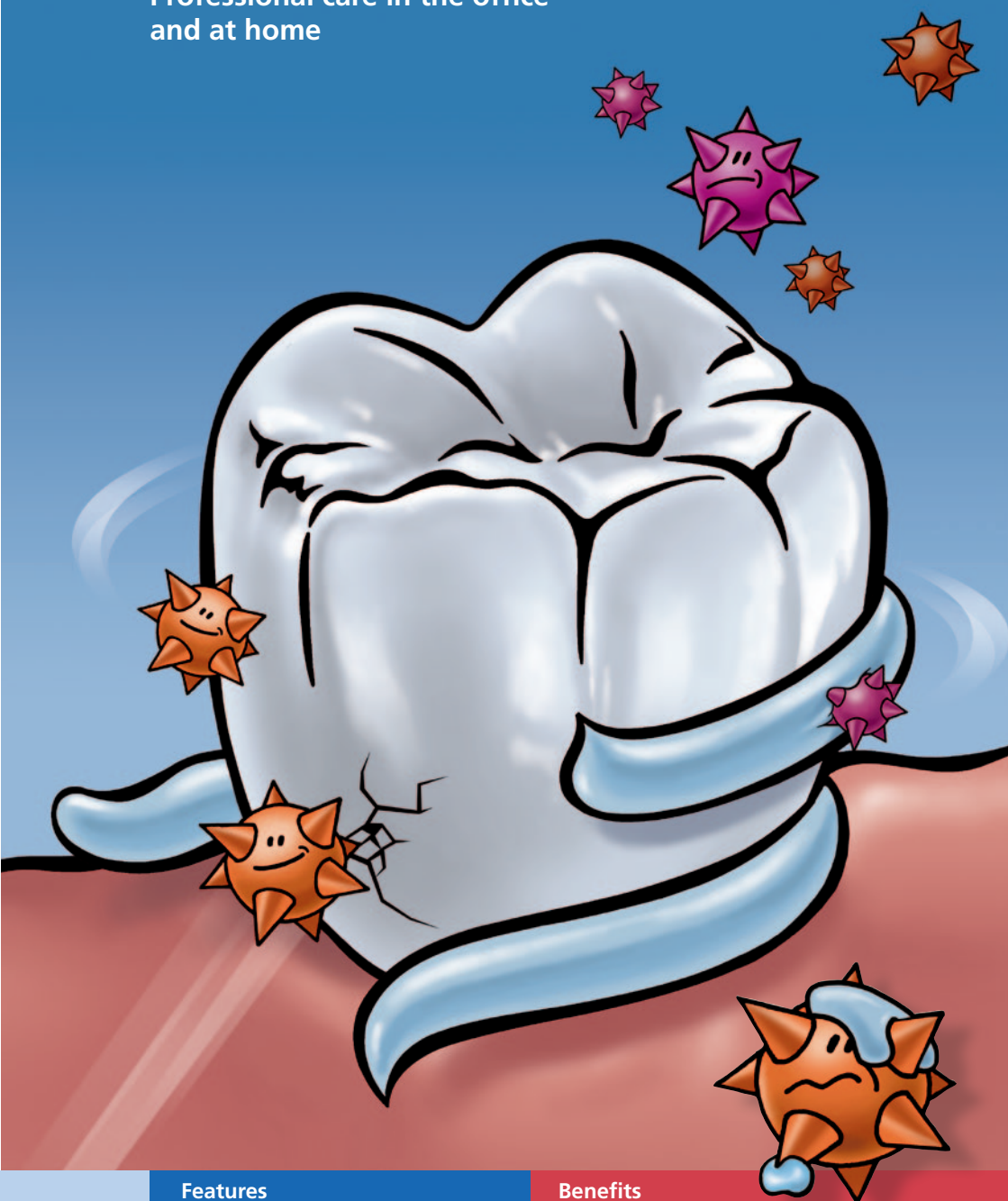
Cervitec Gel is applied on a toothbrush



Cervitec Gel is applied on an interdental brush

# Cervitec<sup>®</sup> Gel

Professional care in the office  
and at home



Features	Benefits
0.2 % chlorhexidine plus 900 ppm fluoride	Powerful combination for treating the gums, peri-implant tissue, the oral mucous membrane and teeth
Smooth consistency	Optimum distribution on intricate surfaces
Easy to use at home	- Perceptible, motivating improvement of conditions in the mouth - Ancillary treatment to professional measures
Pleasant taste	High patient compliance

# Cervitec<sup>®</sup> Liquid



**Antibacterial mouth rinse containing chlorhexidine and xylitol**

## **Professional application in the dental office and at home**

Cervitec Liquid is a ready-for-use antibacterial mouth rinse containing chlorhexidine plus xylitol plus essential oil. These components inhibit the growth of the bacteria that compromise oral health.

Cervitec Liquid spreads these healing ingredients throughout the entire oral cavity

## **One mouth rinse for many different applications**

Cervitec Liquid is recommended for a wide range of indications in the dental office and at home:

- ▶ as an intensive, temporary mouth rinse treatment
- ▶ to prevent the inflammation of the gums, oral mucous membrane and the dental supporting tissue and to assist in their treatment
- ▶ to prevent infections in the mouth and assist in their treatment
- ▶ before and after implantological and periodontal interventions and dental and orthodontic surgery

- ▶ in the event of high caries risk
- ▶ in the event of inadequate oral hygiene
- ▶ to prevent halitosis
  
- ▶ to reduce the aerosol risk in the dental office

## **Powerful without alcohol**

The alcohol-free mouth rinse is suitable for sensitive patients who need to avoid alcohol because of age-related, cultural, religious or health reasons.

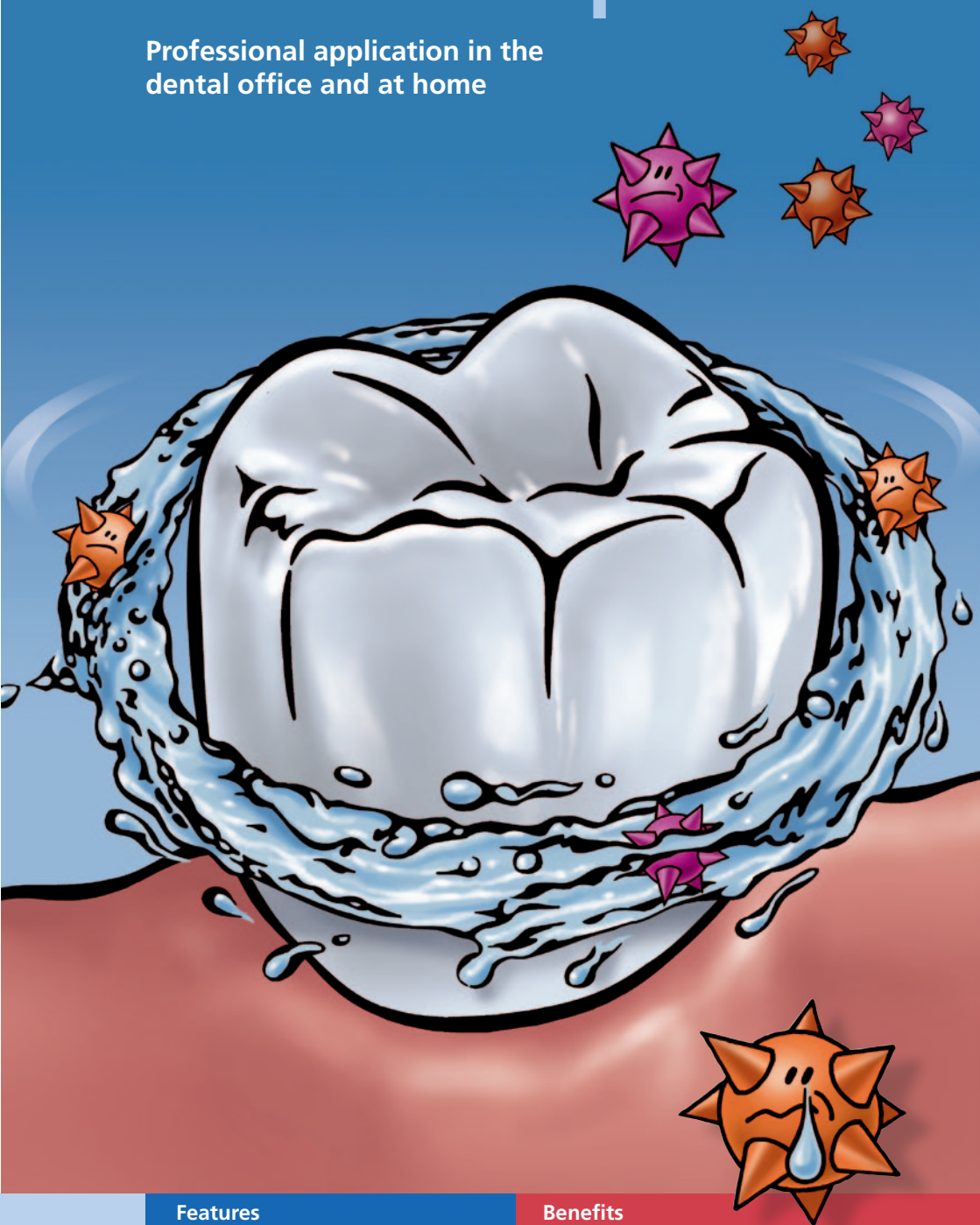
## **Pleasant taste**

The pleasant taste of Cervitec Liquid promotes the compliance of patients. In addition, patients do not feel the need to rinse their mouth with water immediately after using the mouth rinse. As a result, the ingredients have more time to take effect.



# Cervitec<sup>®</sup> Liquid

Professional application in the dental office and at home



Features	Benefits
0.1 % chlorhexidine plus xylitol plus essential oil	<ul style="list-style-type: none"><li>- Effective control of bacteria</li><li>- Ease of use</li><li>- Perceptibly good feeling in the mouth</li></ul>
Alcohol-free	Suitable for sensitive patients
Pleasant taste	<ul style="list-style-type: none"><li>- High level of compliance</li><li>- Enhancement of the treatment success</li></ul>

# Cervitec®

In the dental office and at home






## Cervitec Plus, Cervitec Gel and Cervitec Liquid

The Cervitec products help you to offer your patients the care they need. The products enable you to keep the growth of bacterial biofilms in check.

They contain chlorhexidine and other beneficial components and come in various delivery forms: for in-office use and for at-home application under your professional supervision.



Healthy gums, healthy teeth,  
healthy mouth

Cervitec Plus	Cervitec Gel	Cervitec Liquid
Protective varnish	Oral health care gel	Mouth rinse
1 % chlorhexidine & 1 % thymol	0.2 % chlorhexidine & 900 ppm fluoride	0.1 % chlorhexidine & xylitol & essential oil
Professional application	Professional and at-home application	Professional and at-home application
		



### When are Cervitec Plus, Cervitec Gel and Cervitec Liquid used?

Cervitec products are used in accordance with the diagnosis and the individual requirements of your patients. Cervitec Plus, for example, is the preparation of choice for small children, because it is supplied in varnish form.

During the different phases of implant treatment, however, various Cervitec products can be used, depending on which preparation offers the most benefits in the individual case. Additional information is supplied by the Implant Care Program from Ivoclar Vivadent, which supports you in providing your implant patients with the best possible care.

Target group/Indication	Cervitec Plus	Cervitec Gel	Cervitec Liquid
Aerosol risk			●
Before and after surgery in the mouth			●
High caries risk	● ●	●	
Fissures	●		
Brackets	● ●	●	
Small children	●		
Lack of compliance	●		
Implant patients	●	●	●
Denture stomatitis		●	
Gingivitis/Periodontitis	●	● ●	●
Halitosis		●	●
Impaired oral hygiene capabilities	●		●

Benefits for the dental team	Benefits for patients
Customized solutions for controlling bacteria	The pleasant taste of all the Cervitec products
Clinically proven preparations	Preparations recommended by dental professionals
Easy integration into the treatment procedure and the dental office routine	Pain-free risk control



*Cervitec and the Implant Care Program*

# Cervitec®

Targeted control of bacteria for customized oral health management

**Cervitec Plus, Cervitec Gel and Cervitec Liquid significantly contribute to keeping teeth, crowns, bridges and implants in good condition for a long time.**

## Cervitec Plus delivery forms

### Free Stand Single Dose Assortment

20 Single Dose Units Cervitec Plus, 0.25 g each  
Accessories

### Assortment

1 Dropper Tube Cervitec Plus, 7 g  
Accessories

### Refill

2 Dropper Tubes Cervitec Plus, 7 g each  
Accessories

## Cervitec Gel delivery forms

### Single Tube

Cervitec Gel, 20 g

### Single Tube

Cervitec Gel, 50 g



## Cervitec Liquid delivery forms

### Single Bottle

Cervitec Liquid, 100ml  
Measuring cup

### Single Bottle

Cervitec Liquid, 300ml  
Measuring cup

### For the dental office

6 x Cervitec Liquid, 1000ml each

## Fast assessment

Professional Care products allow the individual patient needs to be efficiently assessed and enable combined measures to be successfully implemented.

### CRT® bacteria

Test for assessing the mutans streptococci and lactobacilli in saliva and plaque

### CRT® buffer

Test for determining the buffer capacity of saliva

### Plaque Test

Fluorescent disclosing liquid for detecting plaque

## Customized treatment

### Proxyt®

Prophy pastes

### Fluor Protector

Protective varnish containing fluoride  
Intensive care gel containing calcium, phosphate and fluoride

### Helioseal®

Fissure sealant

### OptraGate®

Gentle lip and cheek retractor

## Literature

Baca P, Munoz MJ, Bravo M, Junco P, Baca AP: Effectiveness of chlorhexidine-thymol varnish for caries reduction in permanent first molars of 6-7-year-old children: 24-month clinical trial. Community Dent Oral Epidemiol 2002; 30: 363-368

Bolis C, Huwig A: In-vitro-Charakterisierung eines chlorhexidin- und fluoridhaltigen Mundpflegegels; Prophylaxe Impuls 2008; 12: 126-133

Drebenstedt S, Zapf A, Rödig T, Mausberg RF, Ziebolz D: Efficacy of two different desensitizers: A controlled double blind study; submitted for publication

Madléna M, Vitalyos, Marton S, Nagy G: Effect of chlorhexidine varnish on bacterial levels in plaque and saliva during orthodontic treatment. J Clin Dent 2000; 11: 42-46

Sköld-Larsson K, Sollenius O, Pettersson LG, Twetman S: Effect of topical applications of a novel chlorhexidine-thymol varnish formula on mutans streptococci and caries development in occlusal fissures of permanent molars. J Clin Dent 2009; 20: 223-226

Zhang Q, van Palenstein-Helderman WH, van't Hof MA, Truin GJ: Chlorhexidine varnish for preventing dental caries in children, adolescents and young adults: a systematic review. Eur J Sci 2006; 114: 449-455

Descriptions and data constitute no warranty of attributes.

Printed in Liechtenstein  
© Ivoclar Vivadent AG Schaan / Principality of Liechtenstein.  
605581/0610 /e/BVD

Production and Distribution:

**Ivoclar Vivadent AG** Clinical  
Bendererstrasse 2  
9494 Schaan  
Principality of Liechtenstein  
T +423 / 235 35 35  
F +423 / 235 33 60  
www.ivoclarvivadent.com

**ivoclar**  
**vivadent**  
passion vision innovation