

# AdheSE<sup>®</sup> One F

Click & Bond<sup>®</sup> with the VivaPen<sup>®</sup>



**Economical** and  
**convenient to use**

# Click & Bond AdheSE

## HIGH LEVEL OF CONVENIENCE

**AdheSE One F** is a self-etching, light-curing, fluoride-releasing, single-component adhesive for direct restorations (composites, compomers). The popular VivaPen allows AdheSE One F to be applied easily, quickly and economically.

### Everything well in hand

The VivaPen features a unique, ergonomic design that keeps your hand in a natural position and allows you to apply AdheSE One F in a relaxed manner. The slim, pen-like shape and the angled brush cannula are modelled after the time-tested design of dental instruments.



# One F

## ECONOMICAL USE



Source: Dr. A. Peschke, Ivoclar Vivadent AG, Schaan

## Efficient dispensing

The VivaPen allows AdheSE One F to be exactly dosed and applied where needed. Therefore, no material is wasted.

In addition, the snap-on cannula has been specifically designed with minimal residual volume to minimize waste.

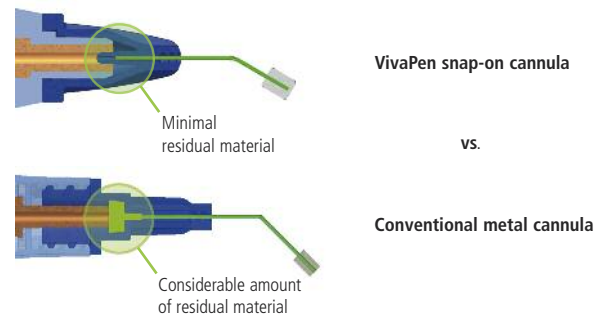
The integrated fill-level indicator allows reliable control of the amount of adhesive that remains in the VivaPen.

As the exact amount of AdheSE One F required is dispensed each time, there is sufficient adhesive for **around 120 applications**.

## Time-saving direct application

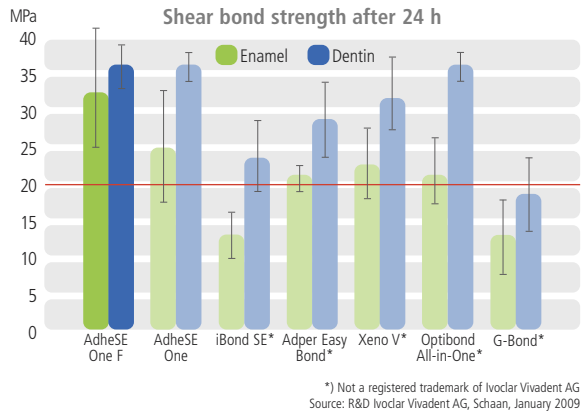
AdheSE One F is applied quickly and easily in only a few working steps:

- Snap on VivaPen brush cannula and rotate it to the desired position.
- Press click mechanism several times until the flocked VivaPen cannula is wetted with AdheSE One F.
- Apply a layer of AdheSE One F and thoroughly brush it into the tooth structure for 20 seconds.
- Remove excess material with a strong stream of air and light-cure for 10 seconds.



# Click &

## LASTING ADHESION



### Strong bond on enamel and dentin

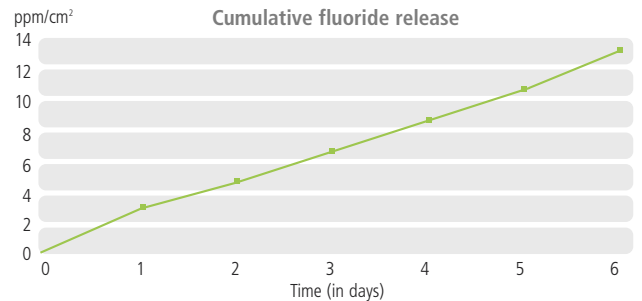
A single layer of AdheSE One F is enough to establish a long-lasting bond to the tooth structure. Due to the low pH value of 1.4, a pronounced etch pattern is produced on enamel. As the composition of AdheSE One F has been optimized, considerably higher bond strengths are achieved on enamel with this adhesive than with AdheSE One. When AdheSE One F is applied to prepared dentin, the smear layer adhering to the dentin is dissolved and becomes part of the hybrid layer consisting of collagen and adhesive.



Enamel etching pattern of AdheSE One F  
Source: R&D Ivoclar Vivadent AG, Schaan, January 2009

### High fluoride release

A source of fluoride has been added to AdheSE One F which enables fluoride ions to be released from the material.



Source: R&D Ivoclar Vivadent AG, Schaan January 2009

#### Storage requirements of single-component self-etching adhesives

AdheSE One F	Room temperature
iBond SE*	Refrigeration
Adper Easy Bond*	Refrigeration
Optibond All-in-One*	Refrigeration
Clearfil S <sup>3</sup> Bond*	Refrigeration
G-Bond*	Refrigeration recommended

\*) Not a registered trademark of Ivoclar Vivadent AG  
Source: Information provided by the manufacturer, January 2009

### Storage at room temperature without compromising the bond strength

The non-acid resistant monomers employed in many self-etching all-in-one adhesives require these products to be refrigerated in order to slow down their degradation. Because of the patented monomers used in AdheSE One F, the product can be stored at room temperature without compromising its quality – from the first to the last “click”.

# Bond with the VivaPen

# One F

Ergonomic,  
recessed grips



Control of the re-  
maining amount  
of material



Exact and econom-  
ical dispensing



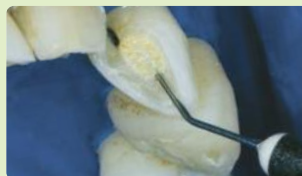
Precise application  
and gentle brushing



Good accessibility of all cavities



Dr. A. Pfannkuch / Germany



Dr. N. Bartling / Switzerland



Dr. L. Enggist / Liechtenstein



Dr. H. Streit / Germany

## ADVANTAGES AT A GLANCE

AdheSE One F	VivaPen
<ul style="list-style-type: none"> <li>• Time-saving: one step, one layer</li> <li>• Consistently high bond strength on enamel and dentin</li> <li>• High fluoride release</li> <li>• Storage at room temperature</li> </ul>	<ul style="list-style-type: none"> <li>• Easy and convenient direct application</li> <li>• Economical dispensing of material</li> <li>• Good accessibility of all cavities</li> <li>• Simple disinfection with disinfectant wipes or protection with the VivaPen sleeve</li> </ul>

### Ordering information

Article number	Delivery form/Contents
<b>613725AN</b>	<b>AdheSE One F Refill</b> 1x2 ml AdheSE One F in the VivaPen 100 VivaPen snap-on cannulas 20 VivaPen sleeves
<b>626967AN</b>	<b>AdheSE One F Refill 3</b> 3x2 ml AdheSE One F in the VivaPen 300 VivaPen snap-on cannulas 20 VivaPen sleeves
<b>627178</b>	<b>Refill VivaPen snap-on cannulas</b> (100 pcs.)
<b>627492</b>	<b>Refill VivaPen sleeves</b> (300 pcs.)

