

# OptraLine

---

Innovative accessories – simply clever



OptraDam®Plus OptraGate® OptraSculpt® OptraContact® OptraPol® OptraFine® OptraStick

# OptraDam® Plus

Unique rubber dam for complete isolation

## Reliable and controlled treatment

OptraDam® Plus has been given a three-dimensional shape for optimum adaptation to the anatomy of the oral cavity, a feature that considerably facilitates access to the treatment field and allows a full view of the dental arches.

## All-in-one solution

Thanks to the integrated frame and perforation pattern OptraDam Plus is easy to place and handle.

## Straightforward isolation technique

Because of its three-dimensional design, OptraDam Plus sits comfortably in the mouth and automatically adapts to the sulcus, improving the seal around the isolated teeth. The highly elastic latex material has been designed to quickly and easily overcome contact points.

## Complete comfort

With its unique design OptraDam Plus is exceptionally comfortable to wear for patients, providing both gentle retraction and protection of the soft tissues.



Contact points may be overcome more easily by separating the teeth with wedges before the rubber dam is placed interproximally. (Pictures: Dr D. Horvath, Germany)



Automatic hold without metal clamps

# OptraGate® ExtraSoft Version

Latex-free lip and cheek retractor for stress-free dental procedures

## More flexibility

The lips and cheeks are retracted gently and evenly over a large area. The result is a full view of the anterior and posterior teeth and easy access to the working field.

## Convenient working

No additional equipment is required. OptraGate allows you to provide dental care in an effective, hassle-free fashion. Your practice team is relieved of duties such as retracting lips and cheeks and can focus on other tasks.

## Complete comfort

The latex-free OptraGate is exceptionally supple, flexible and comfortable to wear, particularly for children. In contrast to conventional rigid retractors made of hard plastic, it even allows patients to close their mouth during the treatment.

## Versatile range of applications

- Professional tooth cleaning
- Periodontal procedures
- Tooth whitening
- Direct and indirect restorative procedures
- Intraoral scanning (CEREC®)
- Orthodontic procedures
- Pediatric dentistry
- etc.



Dr. C. Moussally, France



Ivoclar Vivadent AG, Liechtenstein



Ivoclar Vivadent AG, Liechtenstein



# OptraSculpt®

Effective modelling thanks to reduced stickiness to composite

## Easy handling

The OptraSculpt system consists of two auto-clavable hand-held instruments and disposable modelling tips in six different shapes.

## Reduced adhesion to composite materials

The innovative modelling tips reduce the instrument's adhesion to composite materials during placement. The low composite stickiness enhances the clinician's ability to restore the dental morphology quickly and accurately.

## High flexibility to suit all indications

The different modelling tips can be individually combined to create the instrument that is best suited to the clinical situation at hand, enabling the clinician to sculpt and contour restorations as flexibly and precisely as possible. The modelling tips can be rotated by 360 degrees and snapped into place in the desired position.



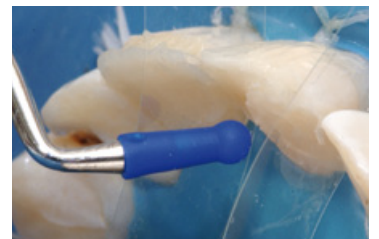
Ivoclar Vivadent AG, Liechtenstein



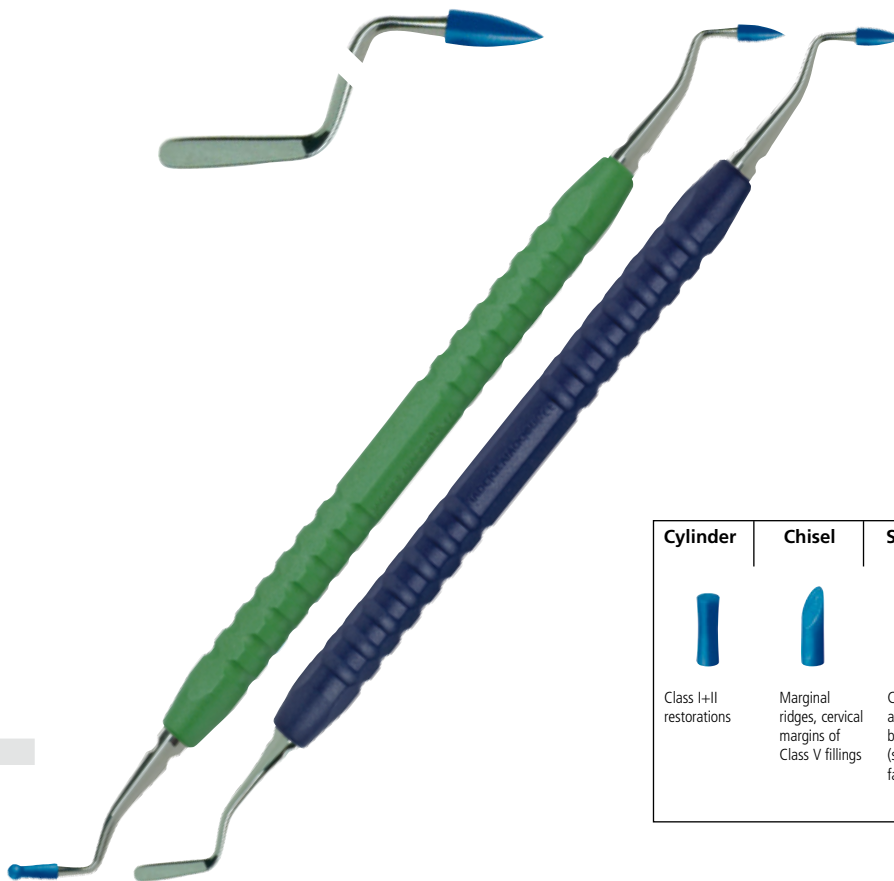
Ivoclar Vivadent AG, Liechtenstein









Ivoclar Vivadent AG, Liechtenstein



Ivoclar Vivadent AG, Liechtenstein



Cylinder	Chisel	Spatula	Ball	Point	Pyramid
					
Class I+II restorations	Marginal ridges, cervical margins of Class V fillings	Class V fillings, all labial and buccal surfaces (smooth surfaces)	Placement of material in general, marginal surfaces of anterior teeth	Pits and fissures	Pits, fissures, edges

OptraLine

# OptraContact®

Perfect anatomical contacts in posterior teeth

## Large and tight contacts

OptraContact is a contact former that features bifurcated ends assisting dental professionals in achieving tight and large proximal contacts. The forked ends ensure that the contacts are placed in the correct anatomical position, i.e. in the upper third of the proximal surface.

## Step-by-step application

**Fig. 1** Place initial layer of composite material.

**Fig. 2** Place OptraContact on the soft composite layer in parallel to the proximal surface and hold it in place.

**Fig. 3** Press the instrument lightly against the matrix band and adjacent tooth during light-curing.

**Fig. 4** A contact "bridge" is formed. The bridge stabilizes the matrix and ensures a large and tight contact. Now, build up the cavity layer by layer, starting by filling the indentations created by OptraContact.



Fig. 1



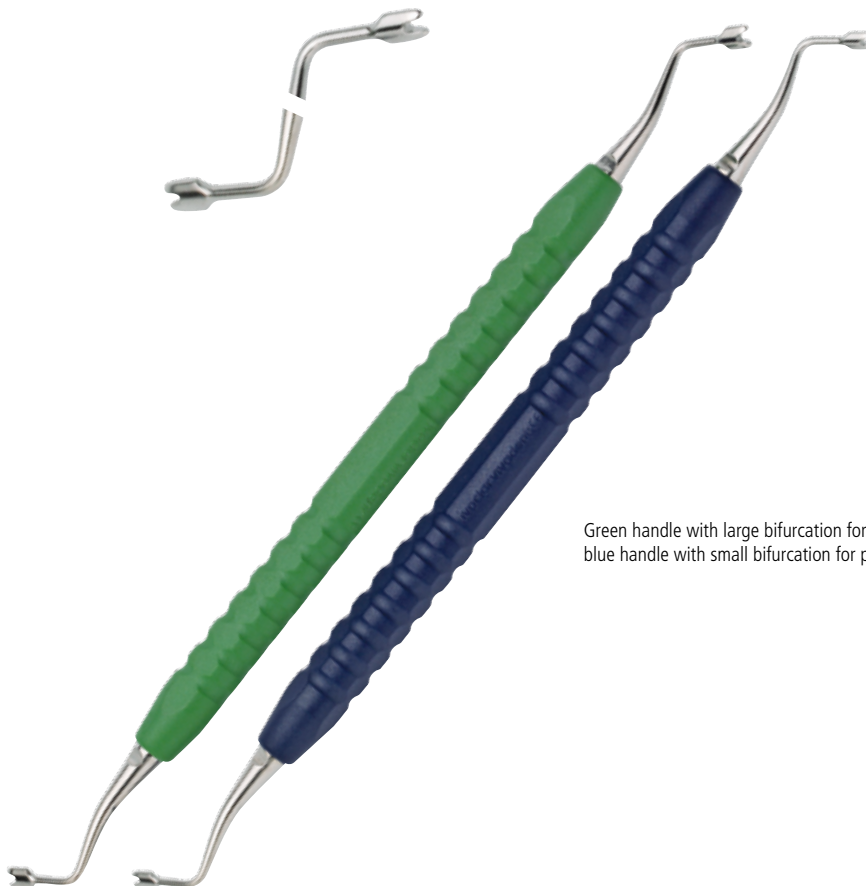
Fig. 2



Fig. 3



Fig. 4



Green handle with large bifurcation for molars and blue handle with small bifurcation for premolars.

# OptraPol® Next Generation

Effective polishers suitable for all composite restorations

## Simply brilliant – In just one step

Highly filled with diamond crystallites (72 wt.%), these polishers offer an outstanding polishing performance, delivering a radiant high-gloss shine to restoration surfaces in only one working step. Composite resin restorations, e.g. made of Tetric EvoCeram®, can be easily polished to an ideally smooth surface finish and a long-lasting natural-looking lustre.

## Universally suitable

All popular dental resin composite restoratives can be finished and polished with the polishers in a single step.

## Long-lasting and economical

The polishers are dimensionally stable and wear resistant. They can be autoclaved and re-used up to 20 times and are therefore exceptionally cost efficient and economical.



Dr M. Dieter, Liechtenstein

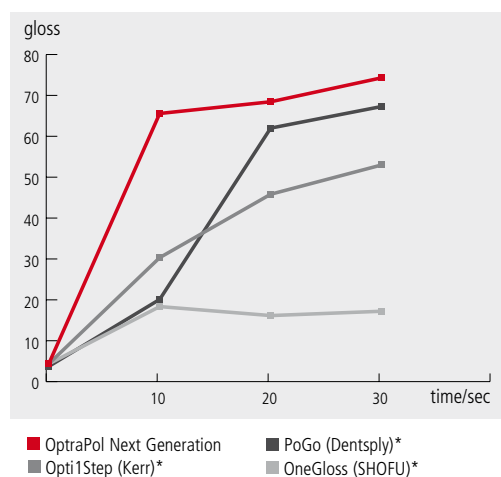


Dr A. Peschke, Liechtenstein



Dr A. Peschke, Liechtenstein

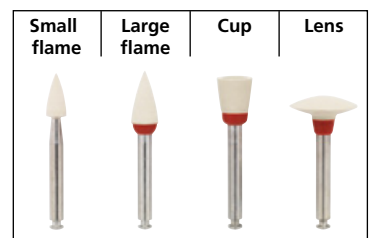
## Measurement of mean surface gloss



**Fig. 1 In only 10 seconds OptraPol Next Generation produced the highest shine of all polishers tested.**

Source: R&D Ivoclar Vivadent AG, Liechtenstein, March 2010

\* Not registered trademarks of Ivoclar Vivadent AG



The shapes of the polishers are optimally matched to the different restoration surfaces.

# OptraFine®

High-quality polishing system for ceramic restorations

## Valuable restorations

OptraFine is a high performance diamond polishing system suitable for all types of ceramic restorations, e.g. restorations made of IPS Empress® CAD or IPS e.max® CAD.

## Economical and cost-efficient

The polishers are autoclavable and highly wear resistant. They can be re-used up to 10 times.

## Superior 3-step polishing system

Featuring an exceptionally high diamond content, this top-of-the-range polishing system combines high efficiency with an outstandingly smooth surface finish.



1. Use the light blue polishers for finishing ...



2. ... and the dark blue ones for polishing.



3. Polish to a high gloss with diamond paste and a nylon brush.



Ivoclar Vivadent AG, Liechtenstein



Ivoclar Vivadent AG, Liechtenstein



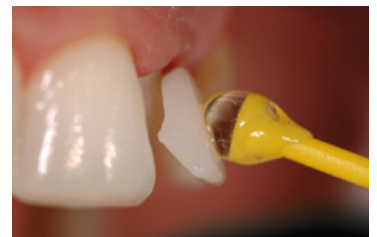
Ivoclar Vivadent AG, Liechtenstein

# OptraStick

Application instrument with a convenient adhesive tip

OptraStick enables users to quickly and easily pick up, hold and place restorations. With just light pressure, the OptraStick adhesive tip precisely adheres to a wide range of small objects and restorations, such as:

- inlays, onlays, crowns or veneers made of IPS Empress® and IPS e.max®
- veneers made of IPS d.SIGN® and IPS InLine® or
- inlays, onlays, ¾ crowns made of Academy Gold™ and Harmony® Medium



Dr E. Mahn, Chile



# DELIVERY FORMS

## OptraDam® Plus

### Assortment

25 size R (regular)  
25 size S (small)



### Refill R

50 size R (regular)

### Refill S

50 size S (small)

## OptraGate® ExtraSoft Version

### Assortment

40 size R (regular)  
40 size S (small)



### Refill R

80 size R (regular)

### Refill S

80 size S (small)

### Refill Junior

80 size Junior

## OptraContact®

### Assortment

1 Molar contact point instrument  
1 Premolar contact point instrument



### Refill Molar

1 Molar contact point instrument

### Refill Premolar

1 Premolar contact point instrument

## OptraPol® Next Generation

### Assortment

6 Polishers small flame  
4 Polishers large flame  
4 Polishers cup  
4 Polishers lens



### Refill Polisher

Each shape is available separately in packets of 10.

## OptraSculpt®

### Assortment

1 Modelling instrument (single-ended)  
1 Modelling instrument (double-ended)  
40 Modelling tips (ball)  
40 Modelling tips (point)  
40 Modelling tips (spatula)  
40 Modelling tips (chisel)  
40 Modelling tips (cylinder)  
40 Modelling tips (pyramid)



### Refill Modelling Instrument

1 Modelling instrument single-ended

### Refill Modelling Instrument

1 Modelling instrument double-ended

### Refill Modelling Tips

Each shape is available separately in packets of 100.

## OptraFine®

### Assortment

2 Flame F (finisher)  
2 Flame P (polisher)  
2 Cup F  
2 Cup P  
2 Disc F  
2 Disc P  
6 Nylon brushes  
1 Polishing paste



### Refills

Each polishing instrument is available separately in packets of 10.

Polishing paste refills are available in single syringes.

## OptraStick

Refills of 50



These products form part of our "Composites" and "All-Ceramics" competence areas. All the products of these areas are optimally coordinated with each other.

User videos are available online at [www.ivoclarvivadent.com](http://www.ivoclarvivadent.com)

**Ivoclar Vivadent AG**  
Bendererstr. 2  
9494 Schaan  
Principality of Liechtenstein  
Tel. +423 / 235 35 35  
Fax +423 / 235 33 60  
[www.ivoclarvivadent.com](http://www.ivoclarvivadent.com)

**ivoclar**  
**vivadent**  
passion vision innovation