

# SR Orthosit® S PE

The posterior composite tooth in PE shades



*Tooth mould  
chart*



**ivoclar**  
**vivadent**  
passion vision innovation

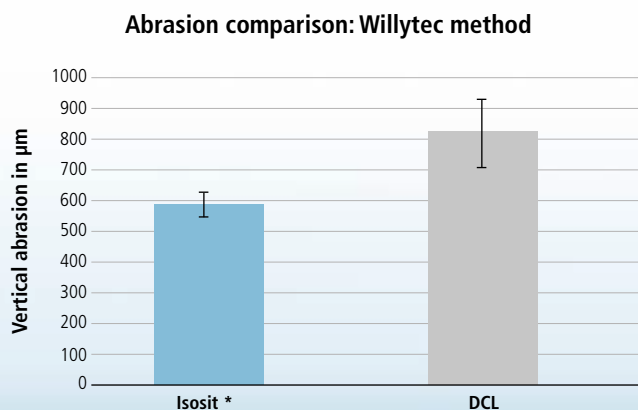
# SR Orthosit® S PE

The posterior composite tooth

## High-performance material

SR Orthosit® S PE is used for indications that require a higher mechanical resistance. It is made of Isosit, an inorganic, filled UDMA composite that has been clinically tried-and-tested for decades. In contrast to PMMA material, Isosit shows a higher abrasion resistance.

The SR Orthosit S PE tooth is functionally completed with its cervical area made of high-quality PMMA material. This creates a chemical bridge to the denture base material. For durable, more abrasion-resistant restorations.



Source: R&D, Ivoclar Vivadent AG, Schaan, 2009

\* Inorganic, filled UDMA composite used for: SR Orthosit S PE and SR Orthosit PE

## PE shading

The shading is coordinated with the SR Vivodent® S PE shade guide typical for fixed prosthetics. Therefore, SR Orthosit S PE is another option for the posterior region of the SR Vivodent S PE line of anterior teeth.



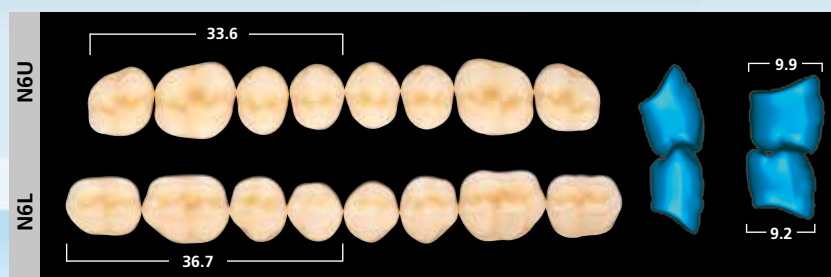
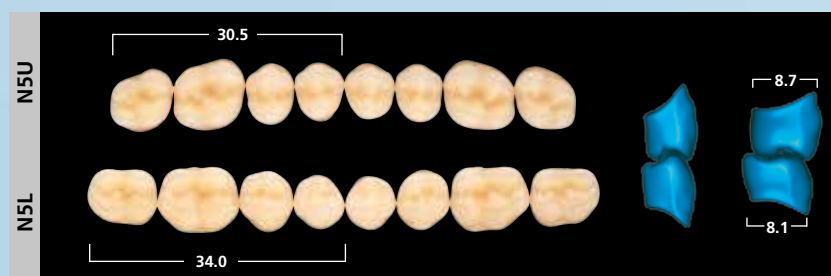
## Delivery form SR Orthosit® S PE

- 4 maxillary sets
- 4 mandibular sets



# Tooth moulds

## SR Orthosit® S PE



# Processing instructions



## Shades

### SR Orthosit® S PE:

The 10 most popular PE shades (01, 1A, 2A, 1C, 2B, 1D, 1E, 3A, 4A and 4B)

## Shade selection

Shade determination is performed with the SR Vivodent S PE shade guide from Ivoclar Vivadent. Shade deviations during shade selection are thus reduced to a minimum. Shade selection on the patient should be carried out under defined light conditions (5,500K colour temperature) during daylight (preferably light from the north).



## Posterior teeth

This tooth mould chart facilitates the selection of posterior tooth sizes intended to match the selected anterior teeth. Ivoclar Vivadent offers users a number of posterior teeth, which give the clinician the opportunity to select a tooth shape that will best meet the functional and esthetic needs of the patient.

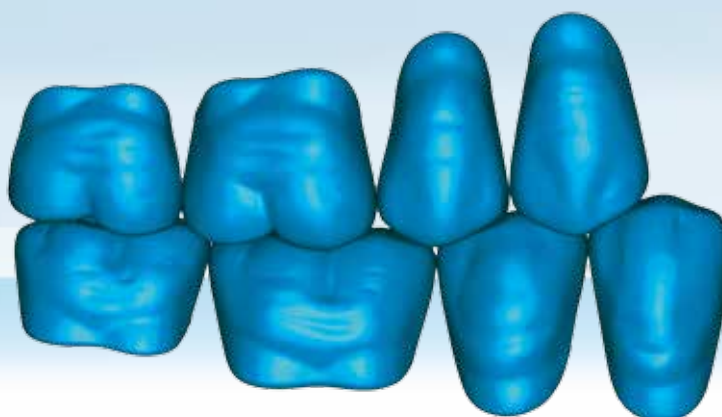
### Occlusal concept

SR Orthosit S PE is a true classic for use in complete, partial, hybrid and implant prosthetics. The Orthosit teeth (Typ tooth mould) are set up in accordance with a normal bite situation in a one-tooth to two-teeth relation. In this way, the primary contacts in the centric position are located in the central fossae in the mandible as well as on the marginal ridges.

Classic occlusion



One-tooth-to-two-teeth set-up



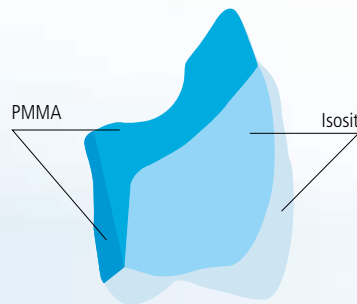


### Minimum layer thicknesses

To maintain the stability of the teeth and the correct shade effect, it is recommended not to underscore the minimum layer thickness.

#### Posterior teeth:

- Central fossae min. 2.0 mm
- In cusp tips min. 2.5 mm
- In the cervical area min. 2.5 mm



### General notes

To ensure that removable dentures remain functional over longer periods of time, the following prerequisites should be met:

- The dentures should be planned and fabricated in close cooperation with the dentist.
- Dentist and dental technician should ensure a balanced occlusion and articulation.
- Dental-lab products are to be used according to the instructions of the manufacturer. Denture teeth in particular should not be weakened by excess grinding.
- In order to ensure a reliable bond with the denture base material, the teeth should be cleaned with steam, roughened and wetted with monomer. For the completion with a self-curing polymer, additional mechanical retentions are recommended.
- The application of a glaze varnish or denture cleaning spray is not recommended.
- The teeth should not be exposed to direct heat or come into contact with a flame.
- During grinding, heat development caused by high grinding pressure must be prevented.
- Users should wear a face mask and, if possible, use suction equipment to protect from grinding dust.
- Dentures can be cleaned with customary cleaning agents. Contact with solvents should be prevented.
- If a patient is known to be allergic to any ingredients of the product, the ready-made teeth should not be used.
- When using C&B veneering materials, the corresponding Instructions for Use must be observed.
- We recommend wearing protective goggles to protect your eyes from grinding chips.

# Combination table

		SR Vivodent® S PE   S DCL		SR Orthosit® S PE SR Orthotyp® S PE   S DCL (22°)	
		Anteriors		Posteriors	
		Upper	Lower	Upper/Lower	
SMALL	▲	A22	A3, A4, A5	N3U/N3L, N4U/N4L	
		A42	A3, A4, A5	N3U/N3L, N4U/N4L	
	●	A44	A3, A4, A5	N3U/N3L, N4U/N4L	
	■	A11	A3, A4, A5	N3U/N3L, N4U/N4L	
		A13	A3, A4, A5, A6	N3U/N3L, N4U/N4L	
MEDIUM	▲	A25	A6, A7, A8	N4U/N4L, N5U/N5L	
		A26	A7, A8	N4U/N4L, N5U/N5L	
	●	A54	A7, A8	N4U/N4L, N5U/N5L	
		A12	A6, A7, A8	N4U/N4L, N5U/N5L	
	■	A24B	A6, A7, A8	N4U/N4L, N5U/N5L	
		A66	A6, A7, A8	N4U/N4L, N5U/N5L	
LARGE	▲	A27	A9, A10	N5U/N5L, N6U/N6L	
		A68	A9, A10	N5U/N5L, N6U/N6L	
	●	A14	A8, A9	N5U/N5L, N6U/N6L	
		A15	A10	N5U/N5L, N6U/N6L	
	■	A17	A9, A10	N5U/N5L, N6U/N6L	

This combination table is recommended as a guideline. In case of particular anatomical conditions, deviations are possible.

## Ivoclar Vivadent - ICDE



Always being on the latest standard of knowledge is a sign of your competence. Ivoclar Vivadent supports you in achieving this goal by conveying to you both knowledge about the latest products and know-how with regard to practice-oriented application and working techniques. The Ivoclar Vivadent ICDE continuously offers basic and advanced training courses tailored to your needs.



<http://www.ivoclarvivadent.com/en/education/>

CE 0123

EN ISO 22112:2006 (D)  
Descriptions and data constitute no warranty of attributes.  
© Ivoclar Vivadent AG, Schaan/Liechtenstein  
Date information prepared: 2018-03-21  
697323/en

Ivoclar Vivadent AG  
Benderstr. 2  
9494 Schaan  
Liechtenstein  
Tel. +423 235 35 35  
Fax +423 235 33 60  
[www.ivoclarvivadent.com](http://www.ivoclarvivadent.com)

ivoclar  
vivadent®  
passion vision innovation