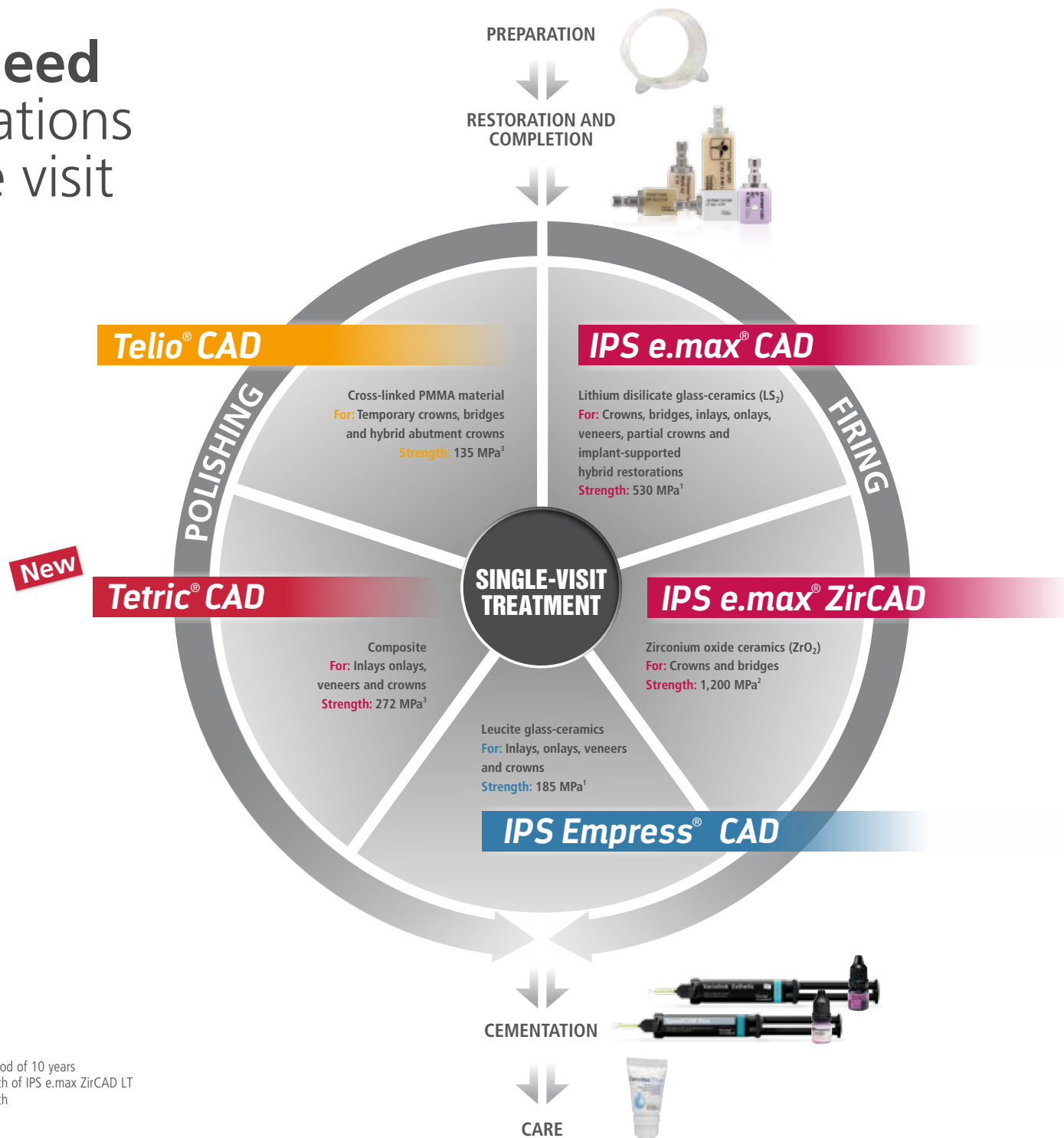


# All you need for restorations in a single visit



<sup>1</sup> Average biaxial flexural strength, over a period of 10 years

<sup>2</sup> Typical mean value of biaxial flexural strength of IPS e.max ZirCAD LT

<sup>3</sup> Typical mean value of biaxial flexural strength

# Strong combinations

	Variolink® Esthetic		SpeedCEM® Plus	Telio® CS Link	Multilink® Hybrid Abutment
<b>Curing</b>	light-curing	dual-curing	self-curing with light-curing option	dual-curing (light- and self-cure)	self-curing
<b>Mode</b>	adhesive		self-adhesive	temporary	adhesive
	Adhese® Universal or Syntac®				
<b>Conditioning</b>	Monobond Etch & Prime®				Monobond® Plus and IPS Ceramic Etching Gel

Extraoral  
cementation

IPS e.max® CAD Lithium disilicate glass-ceramics (LS <sub>2</sub> )					
Occlusal Veneers	✓	✓	—	—	—
Thin Veneers, Veneers	✓	✓	—	—	—
Inlays, Onlays, Partial Crowns	✓	✓	—	—	—
Minimally Invasive Crowns (1 mm)	—	✓	—	—	—
Crowns	—	✓	✓*	—	—
Three-Unit Bridges	—	✓	✓*	—	—
Hybrid Abutments	—	—	—	—	✓
Hybrid Abutment Crowns	—	—	—	—	✓
IPS e.max® ZirCAD Zirconium oxide ceramics (ZrO <sub>2</sub> )					
Crowns	—	—	✓	—	—
Bridges	—	—	✓	—	—
IPS Empress® CAD Leucite glass-ceramics					
Inlays, Onlays, Partial Crowns	✓	✓	—	—	—
Veneers	✓	✓	—	—	—
Crowns	—	✓	—	—	—
NEW Tetric® CAD Composite					
Veneers, Inlays, Onlays (e.g. Partial Crowns, Occlusal Veneers)	✓***	✓***	—	—	—
Crowns	—	✓***	—	—	—
Telio® CAD Cross-linked PMMA material					
Temporary Crowns	—	—	—	✓	—
Temporary Bridges (max. 2 connected bridge pontics)	—	—	—	✓	—
Temporary Hybrid Abutment Crowns	—	—	—	—	✓**

✓ Recommended product combinations  
— Not recommended

\* Conditioning with Monobond Etch & Prime®  
\*\* Conditioning with SR Connect  
\*\*\* Conditioning with Adhese® Universal



Please take note of the corresponding instructions for use.



IPS e.max® Shade Navigation App



CNS: The Cementation Navigation System  
[www.cementation-navigation.com](http://www.cementation-navigation.com)