

Telio[®]

Everything (for) provisionals



Telio®

Everything (for) provisionals

THE COMPATIBLE SYSTEM SOLUTION FOR TEMPORARY RESTORATIONS

Telio® is a comprehensive system solution for temporary restorations. It is designed to be used by dentists, CAD/CAM users and dental technicians alike. All the Telio materials are ideal for the manufacture of conventional and implant-supported temporaries. The materials are fully compatible and their shades are optimally coordinated.

Telio® CS

For dentists

Products for fashioning all types of provisionals chairside



Telio® CAD

For CAD/CAM users

Resin blocks and discs for the efficient fabrication of temporary crowns, hybrid abutment crowns and bridges in the CAD/CAM technique



Telio® Lab

For dental technicians

Resin for the fabrication of long-term temporaries using the cold curing technique



Telio® CS

Products for fashioning all types of provisionals chairside

- **Telio CS Desensitizer**
Desensitizer
- **Telio CS Inlay/Onlay**
Temporary light-curing filling material
- **Telio CS C&B**
Self-curing, temporary crown and bridge material
- **Telio CS Link**
Dual-curing temporary luting composite

Delivery forms

Telio CS C&B Starter Kit A2

1 Telio CS C&B, 78 g, A2
1 Telio CS Link, 6 g, Transparent
1 Telio CS Desensitizer, 5 g
Various accessories
(application brushes, mixing tips, flow chart)
628244AN A2



Telio CS C&B Refill

1 double-barrel cartridge, 78 g,
(in the selected shade)
10 mixing tips

628249AN Bleach BL3
628245AN A1
628246AN A2
628247AN A3
628248AN A3.5
561381AN C&B Dispenser
628157 Refill mixing tips (50 pcs)



Telio CS Desensitizer Refill

627911AN 1 bottle, 5 g
627916AN 50 Single Dose, 0.1 g



Telio CS Link Refill

2 double-push syringes, 6 g
10 mixing tips
627912AN A3
627914AN Transparent
645951 Refill mixing tips (15 pcs)



Telio CS Inlay Syringe

635332AN 3 x 2.5 g Universal
635335AN 3 x 2.5 g Transparent



Telio CS Onlay Syringe

635339AN 3 x 2.5 g Universal
635338AN 3 x 2.5 g Transparent



Telio CS Inlay Cavifil

635333AN 30 x 0.25 g Universal
635334AN 30 x 0.25 g Transparent



Telio CS Onlay Cavifil

635337AN 30 x 0.25 g Universal
635336AN 30 x 0.25 g Transparent



Telio® CS Desensitizer

First aid for exposed dentin



Telio CS Desensitizer is a solution that prevents and/or reduces dentinal hypersensitivity and post-operative sensitivity. Telio CS Desensitizer is suitable for conditioning and desensitizing exposed or ground dentin surfaces (dressing for prepared cavities and teeth).

BENEFITS:

- **Reduced dentin sensitivity** – due to sealing of dentin surfaces
- **Short treatment time** – due to a shorter reaction time and the elimination of the need for light curing
- **Prevention of interactions** – between temporary restorative materials and permanent restorations

INDICATIONS:

Prevention and reduction of dentin hypersensitivity and postoperative sensitivity in conjunction with

- Temporary restorations
- Luting / Cementation of indirect restorations
- Direct restorative treatment
- Treatment of sensitive tooth necks

Clinical case – Telio® CS Inlay with Telio CS Desensitizer (Dr Ronny Watzke, Ivoclar Vivadent Schaan, Liechtenstein)



Fig. 1: Inlay preparation in tooth 34



Fig. 2: The preparation is rinsed and dried.



Fig. 3: The prepared tooth is desensitized with Telio CS Desensitizer.



Fig. 4: Telio CS Inlay material is applied (Cavifil).

Telio® CS Inlay/Onlay

Temporary light-curing filling material



Telio CS Inlay and Telio CS Onlay are light-curing single-component materials for the temporary restoration of teeth without the use of a temporary cement or an adhesive.

BENEFITS:

- **Easy removal (in one piece)** – due to optimum indication oriented elasticity
- **Highly esthetic** – due to colour-stable materials
- **Minimal marginal gap formation** – due to low volumetric shrinkage

INDICATIONS:

Telio CS Inlay:

- Deep inlay preparations with parallel walls
- Sealing of implant screw channels
- Relining of prefabricated temporary polycarbonate or methacrylate crowns and bridges.

Telio CS Onlay:

- Large and shallow preparations (onlays). After it has been cured Telio CS Onlay is less elastic than Telio CS Inlay, which may complicate its removal from undercut areas.



Fig. 5: The temporary is contoured.



Fig. 6: The Telio CS Inlay material is polymerized.



Fig. 7: Completed temporary after finishing/polishing



Fig. 8: The temporary is removed with a scaler.

Telio® CS C&B

Self-curing, temporary crown and bridge material



The self-curing composite resin for high-quality temporary crowns and bridges is supplied in five shades: BL3, A1, A2, A3, A3.5.

BENEFITS:

- **Excellent service life** –
due to high flexural strength and modulus of elasticity
- **Accurate and stress-free fit** –
due to low volumetric shrinkage and minimal water absorption
- **Kind to pulp and other tissues** –
due to low temperature increase during polymerization

INDICATIONS:

- Temporary crowns, bridges, inlays, onlays, post-retained temporaries and veneers
- Relining of lab-fabricated resin temporaries (e.g. Telio CAD, Telio Lab)
- Relining of prefabricated polycarbonate crowns

Clinical case – Telio® CS C&B with Telio® CS Link (Dr Ronny Watzke, Ivoclar Vivadent Schaan, Liechtenstein)



Fig. 1: Anatomic impression taking before tooth preparation e.g. with Virtual® Putty



Fig. 2: Telio CS C&B is applied in the impression.



Fig. 3: The impression is removed.



Fig. 4: The temporary is finished.

Telio® CS Link

Temporary luting cement



Telio CS Link is a dual-curing (light and self-curing) temporary luting composite that is used to seat esthetic temporary restorations (max. 6 weeks).

BENEFITS:

- **Good retention** –
due to high compressive strength and high Shore D hardness
- **Flexibility in treatment planning** –
and in the selection of the permanent materials due to the eugenol-free cement
- **Highly esthetic** –
due to two translucent shades (A3 and Transparent)

INDICATIONS:

Temporary cementation of the following restorations:

- Provisional crowns, bridges, inlays, onlays and veneers (e.g. Telio CS C&B)
- Provisionals made of Telio CAD
- Provisionals made of Telio Lab



Fig. 5: Telio CS Link is applied in the temporary.

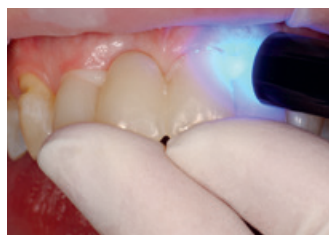


Fig. 6: The curing of the cement is accelerated with a curing light (quarter technique).



Fig. 7: Excess is removed with a scaler.



Fig. 8: Completed temporary made of Telio CS C&B



Fixed denture prosthetics

Telio forms a part of the "Fixed Prosthetics" product category. The products of this category cover the procedure involved in the fabrication of fixed prosthetic restorations – from temporization to restoration care. The products are optimally coordinated with each other and enable successful processing and application.



THESE ARE FURTHER PRODUCTS OF THIS CATEGORY:

IPS e.max® System

all ceramic – all you need



A comprehensive solution covering all indications

- Highly esthetic, high-strength materials for the press and CAD/CAM technique
- Unique lithium disilicate (LS₂) and zirconium oxide (ZrO₂) ceramics for restorations ranging from thin veneers to long-span bridges
- Flexibility of cementation: adhesive, self-adhesive and conventional

Variolink® Esthetic

The esthetic luting composite



Amazingly simple esthetics

- Balanced and straightforward Effect shade system
- Excellent shade stability thanks to an amine-free formulation
- Easy and precise removal of excess

Would you like to know more about the products of the "Fixed Prosthetics" category? Simply get in touch with your contact person at Ivoclar Vivadent or visit www.ivoclarvivadent.com