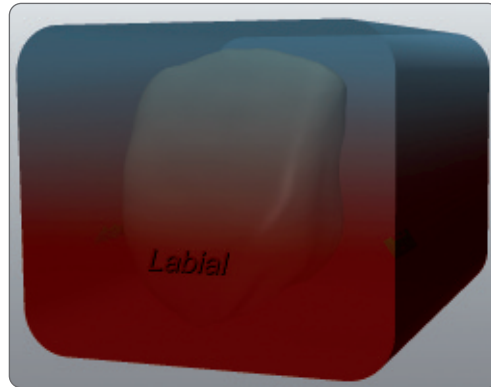




Positioning Guide

FRONTZAHNKRONE / ANTERIOR CROWN

Hohe Position *High Position*

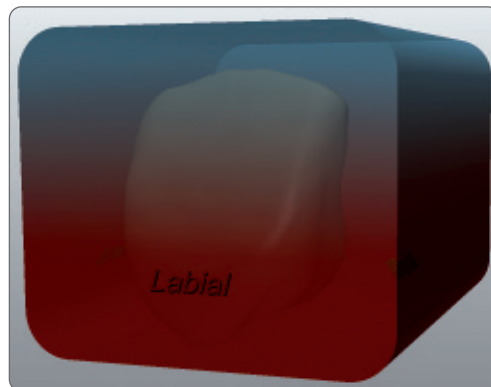


Schleifvorschau (C 14 Block)
Milling preview (C 14 block)

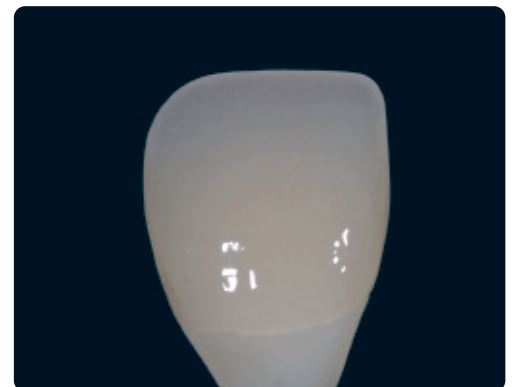


Endsituation glasiert
Final Situation glazed

Mittlere Position *Medium Position*

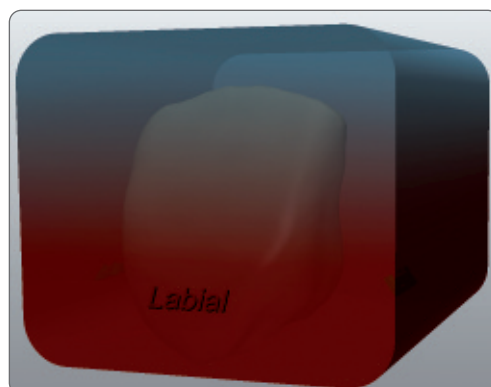


Schleifvorschau (C 14 Block)
Milling preview (C 14 block)



Endsituation glasiert
Final Situation glazed

Tiefe Position *Low Position*



Schleifvorschau (C 14 Block)
Milling preview (C 14 block)



Endsituation glasiert
Final Situation glazed

Die Größe der Restauration beeinflusst die möglichen Positionen im Block. Die Screenshots zeigen die Schleifvorschau in der inLab® Software V.2.90.

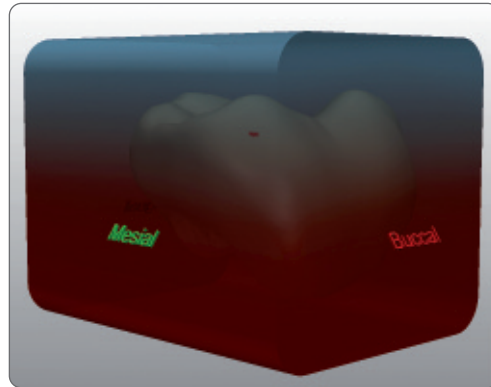
The size of the restoration influences the possible positions in the block. The screenshots show the milling preview in the inLab® Software V.2.90.



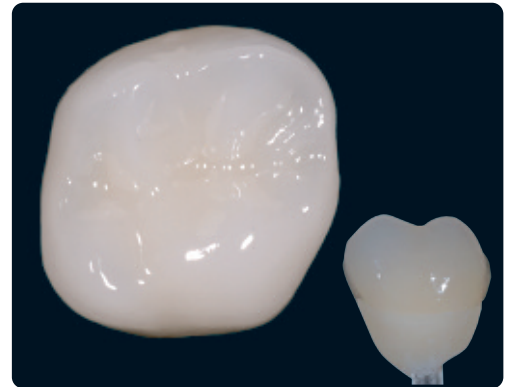
Positioning Guide

SEITENZAHNKRONE / POSTERIOR CROWN

Hohe Position High Position

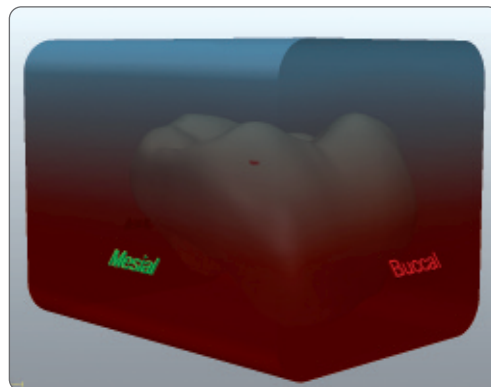


Schleifvorschau (C 14 Block)
Milling preview (C 14 block)

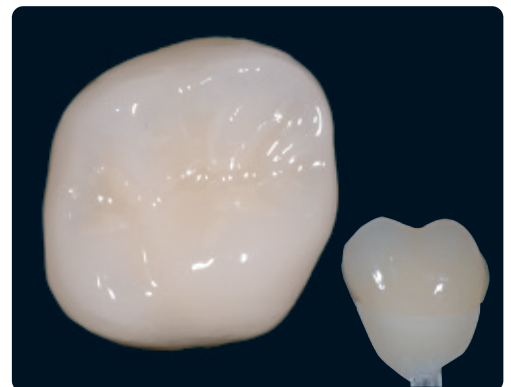


Endsituation glasiert
Final Situation glazed

Mittlere Position Medium Position

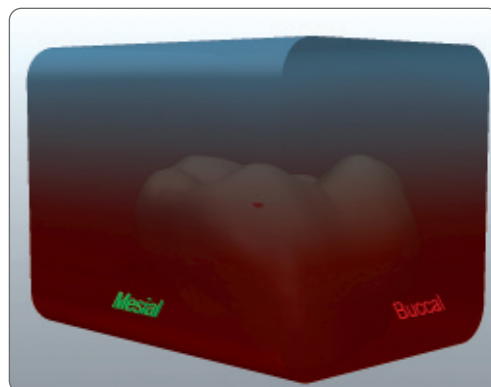


Schleifvorschau (C 14 Block)
Milling preview (C 14 block)

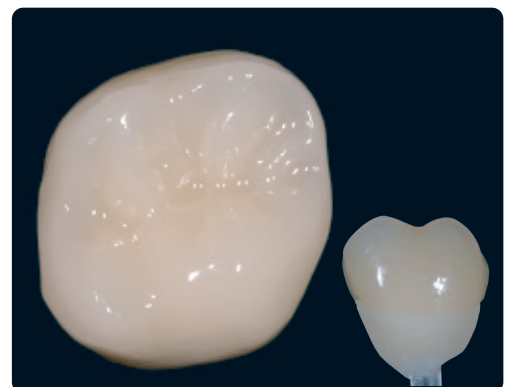


Endsituation glasiert
Final Situation glazed

Tiefe Position Low Position



Schleifvorschau (C 14 Block)
Milling preview (C 14 block)



Endsituation glasiert
Final Situation glazed

Die Größe der Restauration beeinflusst die möglichen Positionen im Block. Die Screenshots zeigen die Schleifvorschau in der inLab® Software V.2.90.

The size of the restoration influences the possible positions in the block. The screenshots show the milling preview in the inLab® Software V.2.90.